

# PRECISION

## TURBO & ENGINE



Best Engineered Car at the 2014 NHRA U.S. Nationals

THE WINNING EDGE IN  
BOOSTED PERFORMANCE

2015 CATALOG



PHONE: 855.996.7832

FAX: 219.996.7749

WWW.PRECISIONTURBO.NET

SHOP.PRECISIONTURBO.NET

**MAILING ADDRESS**

P.O. Box 425, Hebron, IN 46341

**SHIPPING ADDRESS**

616A South Main Street, Hebron, IN 46341

# TABLE OF CONTENTS

ABOUT PRECISION TURBO & ENGINE ..... 3

PRECISION'S RACING HISTORY..... 4

WARRANTIES / POLICIES..... 5

NEW PRODUCTS FOR 2015..... 6

PRECISION GEAR & APPAREL..... 7-11

CHAMPIONS & RECORD HOLDERS..... 12

**TURBOCHARGERS**

PRECISION TURBOCHARGERS 590 - 2800 HP .....14-19

BUICK / PONTIAC / GMC TURBOCHARGERS ..... 20

SUBARU & FORD TURBOCHARGERS..... 21

DIRECT REPLACEMENT TURBOCHARGERS..... 22

CLASS LEGAL TURBOCHARGERS ..... 23

ENTRY LEVEL TURBOCHARGERS 385 - 1400 HP. ....24-27

TURBINE HOUSING OPTIONS & TECH INFO ..... 28-31

COMPRESSOR COVER INFO. .... 32

**ACCESSORIES / BOOST CONTROL / INTERCOOLERS**

TURBOCHARGER ACCESSORIES.....34-35

BOOST CONTROL .....36-37

AIR-TO-AIR INTERCOOLER CORES..... 38

COMPLETE AIR-TO-AIR INTERCOOLERS ..... 39

LIQUID-TO-AIR INTERCOOLERS .....40-41

CHAMPIONS & RECORD HOLDERS..... 42

**FUEL SYSTEM COMPONENTS**

FUEL INJECTORS..... 44

FUEL SYSTEM COMPONENTS..... 45

CHAMPIONS & RECORD HOLDERS..... 46

**ENGINE MANAGEMENT / DATA ACQUISITION**

ENGINE MANAGEMENT SYSTEMS..... 48

DATA ACQUISITION ..... 49

THROTTLE BODIES / INTAKE PLENUMS ..... 50

TORQUE CONVERTERS..... 51



# ABOUT PRECISION TURBO

Founded in 1987, Precision Turbo and Engine (PTE) is one of the world's foremost manufacturers of high performance, aftermarket turbochargers for street and race applications. Precision's manufacturing facility, conveniently located in Northwest Indiana, has been a worldwide supplier of high performance turbochargers that have set the standard for uncompromised quality and unsurpassed performance since the late 1990s. Over the years, PTE has designed, tested, and manufactured record setting and championship winning turbochargers for all racing organizations, as well as Original Equipment Manufacturers such as General Motors.

Additionally, PTE manufactures its own line of intercoolers, boost control products, electronic fuel injectors, and is a top distributor for stand-alone engine management systems and fuel system components. Each sale comes with expert advice and support.

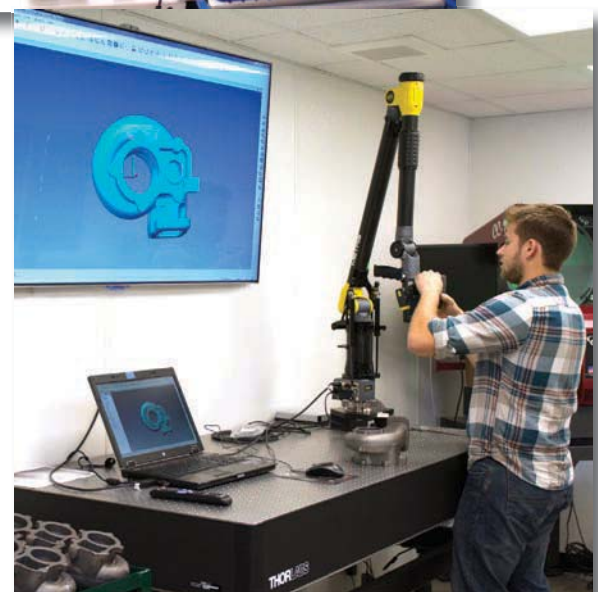
With a wide range of product lines and thousands of SKU numbers available for immediate shipment from our centrally located facility in the Midwest, Precision Turbo & Engine is ready to help boost you straight to the finish line. Our fully computerized ordering and shipping departments allow us to process and ship orders throughout the United States and around the world.



## Quality

While Precision's turbochargers have always set the standard for uncompromised quality and unsurpassed performance, we are taking our quality one step further by actively pursuing ISO 9001 registration in 2015. The majority of our manufacturing is done within the U.S. and VSR (Vibration Sorting Rig) balancing is utilized to guarantee unsurpassed performance. We work closely with all of our suppliers to ensure their components are compliant with PTE specifications.

Precision's strict engineering standards and development processes ensure that only the most powerful, most reliable, and safest parts leave our facility. We want your vehicle to perform to its fullest potential, and we take our job seriously when it comes to providing the best parts that exceed your goals!



[FACEBOOK.COM/PRECISIONTURBO](https://www.facebook.com/precisionturbo)

[TWITTER.COM/PRECISIONTURBO](https://twitter.com/precisionturbo)

[YOUTUBE.COM/PRECISIONTURBONET](https://www.youtube.com/precisionturbonet)

# PRECISION'S RACING HISTORY

Precision Turbo's racing heritage can be dated back to 1989, when PTE owner and president Harry Hruska worked with John Lingenfelter on his Bonneville Land Speed record setting Trans Am. Precision also proudly supplies the boost for the Q80 Racing Team's world's quickest and fastest doorslammer car (5.46 at 272.50 mph in the 1/4 mile), the world's fastest piston-engine, wheel driven car the "Speed Demon" (451.933 mph), five-time Hot Rod Drag Week Unlimited Class winner Larry Larson, Mike Murillo's multiple national championships, and many others!

Since 2008, Precision Turbo and Engine customers have compiled over 119 world championships and set over 256 world records. This is a feat that no other forced induction manufactured can claim. Precision-boosted vehicles have set numerous records and won championships in a wide array of racing sanctioning bodies.

PTE customers have also found great success in the world of tractor pulling, truck pulling, time attack, road racing, drifting, autocross, on the Bonneville Salt Flats and on the water with modified jet skis and race boats!



*George Poteet and Ron Main's "Speed Demon"*

World's Fastest Wheel-Driven, Piston Powered Vehicle: 451.933 MPH



*Turky al Zafiri*

World's Quickest Doorslammer 5.461 ET

# WARRANTIES & POLICIES

## Warranty

Each Precision Turbo brand turbocharger is warranted to be free from manufacturer's defects for a period of 12 months or 12,000 miles, whichever occurs first, from date of original invoice. The Manufacturer's Warranty otherwise applies. Seller expressly disclaims all implied warranties of merchantability and/or fitness for a particular purpose.

Precision Turbo will repair or replace at its discretion any precision turbo branded product that proves defective in material or workmanship under normal installation, use and service. In the case of any warranty claim with regards to defects in material or workmanship, the product in question should be returned freight prepaid to the address shown on page 2.

This warranty does not cover damage or failure of components due to normal wear and tear. There is no warranty on any parts used in race applications or on products that have been physically altered, improperly installed or not maintained. Seller's warranty is in lieu of all other warranties, express or implied.

## Returns

Returns for credit or exchange are allowable only with a Returned Goods Authorization (RGA) number for 30 days from date of shipment. Restocking fees may apply. Product must be new or in resalable condition and returned at the customer's expense freight prepaid. All claims for shipping damage must be placed with the carrier.

## Disclaimer

Precision Turbo does not warrant the accuracy or completeness of the information contained in this catalog. Any information and specifications contained in this catalog are provided "as is" without any representation or warranty, express or implied, of any kind, including, but not limited to, warranties of merchantability, non-infringement, or fitness for any particular purpose. Some jurisdictions do not allow for the exclusion of implied warranties, so the above exclusions may not apply to you.

Any cause of action you may have with respect to your use of this catalog must be commenced within one (1) year after the claim or cause of action arises within Porter County, Indiana. If for any reason a court of competent jurisdiction finds any provision of the agreement or portion thereof, to be unenforceable, that provision shall be enforced to the maximum extent permissible so as to affect the intent of the agreement, and the remainder of this agreement shall continue in full force and effect.

Federal, state, or provincial laws, rules and regulations in the U.S., Canada, or elsewhere may prohibit the removal or modification of components that were installed on motor vehicles or engines by the original equipment manufacturer in order to meet emissions requirements or to comply with safety regulations applicable to engines or vehicles manufactured for use on public roads. Removal of such components and installation of Precision Turbo products may be illegal and considered to be emissions-related tampering under applicable laws, rules and regulations. Motor vehicles or engines equipped with Precision Turbo products may not be used on public roads, as installation of such products could cause the vehicles or engines to be non-compliant with applicable emissions and/or safety standards.

Installation of Precision Turbo products (or similar products from other manufacturers) on a motor vehicle or engine may void, reduce or otherwise adversely affect any warranties given by the manufacturer or seller of the vehicle, engine or other component parts. Precision Turbo shall not be liable for any such adverse effect on such other manufacturers' or sellers' warranties. In no event shall Precision Turbo be liable to any person or entity for any direct, indirect, special, consequential, or other damages (including, without limitation, any lost profits, business interruption, loss of information or programs, or other data on your information handling system) that are related to the use of, or the inability to use, the content, materials, and functions of the site or any linked website, even if expressly advised of the possibility of such damages.



[FACEBOOK.COM/PRECISIONTURBO](https://www.facebook.com/PrecisionTurbo)



[TWITTER.COM/PRECISIONTURBO](https://twitter.com/PrecisionTurbo)



[YOUTUBE.COM/PRECISIONTURBONET](https://www.youtube.com/PrecisionTurboNet)

# NEW FOR 2015

Precision Turbo is committed to bringing the most technologically advanced products to the high performance aftermarket while our customers continue to set the pace with 16 championships and 53 records in the 2014 racing season.

With a dedicated commitment to innovation, Precision Turbo is proud to expand its line of turbochargers featuring PTE's revolutionary GEN2 Aerodynamics. These compressor wheels were specifically engineered with hardcore racers and street enthusiasts in mind and produce massive power gains without sacrificing spool-up time. Precision Turbo will also be introducing several new sizes of its high-performance external wastegates, which are the perfect complement to any turbocharged vehicle. Additionally, new stainless steel turbine housing options for PTE's Street and Race turbochargers will be available to racers and enthusiasts, along with even more great record setting and championship winning Class Legal turbochargers!

## GEN2 6870 CEA® Aerodynamics

Precision's new GEN2 6870 CEA® (Competition Engineered Aerodynamics) wheels **boast never before seen levels of technology and engineering advancements** in turbocharger wheel design. In testing, PTE's GEN2 CEA® wheels offer substantially more horsepower, mm for mm, when compared to similarly sized wheels of older designs, especially those from other manufacturers.

Unlike anything else on the market today, Precision's GEN2 CEA® wheels offer unparalleled performance, greater efficiency at higher pressure ratios, less turbo lag, and are set to be serious game-changers in the world of turbo technology.



## GEN2 6870 CEA® Turbo

- See page 17

## Subaru WRX Bolt-On Turbo

- See page 21

## Ford EcoBoost Turbo Upgrade

- See page 21



*As we continue to innovate and expand our product line, you can expect to see more new products in 2015 to help keep you ahead of the competition!*

# PRECISION GEAR



## **1 Compressor Hat**

Designed to match the rest of our great apparel, the latest hat from Precision features an embroidered Precision Turbo & Engine logo on the front along with the iconic PTE compressor image, and the word "Boosted" across the back. Hats are fitted style for the ultimate in comfort and available in either flat- or rounded-bill styles.

*Available in fitted sizes: Small/Medium and Large/Extra Large*

## **2 RUN PTE Tee**

It's not tricky to go old school and show the world you "RUN PTE"! If you like to boost this way, pick up one of our hottest new t-shirts and you'll be down with the kings in no time.

*Available in sizes: Small (S) through 5 Extra Large (5XL)*

## **3 Ladies Boosted Shorts**

Warm weather means you can show off, so why not show off your love of boost? Made from soft jersey cotton, these cute and sporty shorts will keep you looking hot when temperatures soar!

*Available in sizes: Extra Small (XS) through Extra Large (XL)*

# PRECISION GEAR

## 4 Mens Turbo Tread Tee

One of the hottest designs in boosted apparel, this shirt is the perfect accessory to the turbo you've got under your hood. Featuring a distressed turbocharger and wastegate image along with the Precision Turbo & Engine logo on the front, this tee also has a cool tire tread and PTE logo across the back.

Available in sizes: Small (S) through 5 Extra Large (5XL)

## 5 Mechanics Shirt

Stay clean and look good while you get your car ready for the race season with this great PTE mechanic shirt. Featuring the Precision Turbo & Engine logo on the front and back, this shirt also has a graphic of a turbo compressor cover.

Available in sizes: Small (S) through 5 Extra Large (5XL)

## 6 Boosted Hat

If you're like us you spend your days at the track under the sun. Keep cool with a great new hat from Precision! Featuring an embroidered Precision Turbo & Engine logo on the front, this hat also has "Boosted Technology" across the back.

Available in fitted sizes: Small/Medium and Large/Extra Large

## 7 Compressor Tee & Long Sleeve Tee

You may not want people knowing exactly what you've got under your hood, but you've got Precision pride and like showing it off. Featuring the Precision Turbo & Engine logo on the front, this shirt also has a graphic of a turbo compressor cover and the PTE logo across the back shoulders.

Available in sizes: Small (S) through 5 Extra Large (5XL)





# PRECISION GEAR

## **8 Ladies Turbo Tread V-Neck Tee**

This shirt is specifically designed for Precision ladies who want to look good while showing off their love of boost! Featuring a distressed turbocharger and wastegate image along with the Precision Turbo & Engine logo on the front, this tee also has a cool tire tread and PTE logo across the back.

Available in sizes: Extra Small (XS) through Extra Large (XL)

## **9 Ladies Compressor V-Neck Tee**

This shirt is specifically designed for Precision boosted ladies! Featuring a flattering, feminine cut, this V-neck tee also has a very special pink PTE logo and pink turbo compressor cover design!

Available in sizes: Extra Small (XS) through Extra Large (XL)

## **10 Ladies Boosted Sweatpants**

Stay warm, be comfortable and show off your Precision pride with our ladies lounge pants. Designed to fit well and flatter every figure, these ladies sweats feature a special pink turbo compressor image and say "BOOSTED" down the leg.

Available in sizes: Small (S) through Extra Large (XL)

## **11 PTE Turbocharger Keychain**

This is the smallest turbocharger that we make! Featuring the Precision Turbo & Engine logo engraved onto the compressor cover just like the real thing. The compressor wheel on these polished keychains also spins freely!



[FACEBOOK.COM/PRECISIONTURBO](https://www.facebook.com/PrecisionTurbo)

[TWITTER.COM/PRECISIONTURBO](https://www.twitter.com/PrecisionTurbo)

[YOUTUBE.COM/PRECISIONTURBONET](https://www.youtube.com/PrecisionTurboNet)

# PRECISION GEAR

## 12 Black Compressor Hoodie

Want to show the world that you're Precision boosted even in colder weather? This ultra-comfortable hoodie will help you look good and go fast, complete with a turbo compressor cover design on the front and a PTE logo on the back.

Available in sizes: Small (S) through 5 Extra Large (5XL)

## 13 Pink Compressor Hoodie

Stay cozy while you're at the track with the perfect hoodie that you'll want to wear all the time. This pink hoodie is specifically designed for Precision boosted ladies and features a special pink PTE logo and turbo design!

Available in sizes: Small (S) through 2 Extra Large (2XL)



14

## 14 PTE Can Coolie

Boost your favorite beverage with a PTE can coolie! Fits most standard-sized bottles and cans.

## 15 Zip-Up Compressor Hoodie

Featuring our iconic turbo compressor cover design on the front and a PTE logo on the back, our zip-up hoodies are made from 100% pure cotton and are preshrunk to ensure a great fit. Heavy weight, durable, and comfortable. Keep a PTE zip-up hoodie handy for those cooler nights out racing.

Available in sizes: Small (S) through 5 Extra Large (5XL)



# PRECISION GEARZ

## 16 Boys "Racer in Training" Tee

Is your little man the next Precision Boosted racer? Featuring a unique "Racer in Training" design, this special tee made just for him will help inspire the drive to greatness!

Available in sizes: Youth Extra Small (YXS) through Youth Large (YL)



## 17 Boosted Baby Onesie

Start 'em young and raise 'em right! Get your future, successful race car driving career started with a PTE boosted baby onesie. Our baby onesies are made from soft, 100% pure cotton and are preshrunk to ensure a great fit. Choose from black, red, or pink!

Available in sizes: Newborn through 24-Months

## 18 Girls "Turbo Angel" Tee

Does your little princess like to help out around the shop and dream of one day racing her own car? Well, this special "Turbo Angel" design shirt will help her look like the future star she will be one day!

Available in sizes: Youth Extra Small (YXS) through Youth Large (YL)

All child models are the kids of proud Precision employees!



[FACEBOOK.COM/PRECISSIONTURBO](https://www.facebook.com/PrecisionTurbo)

[TWITTER.COM/PRECISSIONTURBO](https://twitter.com/PrecisionTurbo)

[YOUTUBE.COM/PRECISSIONTURBONET](https://www.youtube.com/PrecisionTurboNet)

# CHAMPIONS & RECORD HOLDERS



**Nick Agostino**

Outlaw 10.5 SB ET and MPH World Record Holder  
(1/8th mile): 4.01 @ 194 MPH  
Outlaw 10.5 SB ET and MPH World Record Holder  
(1/4 mile): 6.10 @ 209 MPH



**Andreas Arthursson**

FIA AT/Altered ET Record: 6.11



**Dwayne Barbaree**

NMCA Street Outlaw Champion  
NMCA Street Outlaw Top Speed Record: 201.13 MPH  
1st Street Outlaw Car in the 6s (NMCA and NMRA)



**Chris Barton**

OTTPA Diesel 4 X 4 Truck Champion



**Keith Berry**

2014 NMCA Radial Wars Champion  
World's Quickest & Fastest LSX-Powered Drag Radial Vehicle  
World's Quickest & Fastest SB-Powered Drag Radial Vehicle



**Sam Bolton**

FWD Drag Series Champion



**Rich Bruder**

World's Quickest and Fastest X275 Car:  
4.463 @ 161.06 MPH



**Brandon Clark**

OTTPA Light Limited Pro Stock Champion



**Ronnie Diaz**

World's Quickest and Fastest Single-Power Adder Mod  
Motor: 4.62 @ 157 MPH



**Brian Faessler**

- 2014 NARRA Time Trial Unlimited National Champion
- 2014 NARRA GTU Championship Runner-Up
- 2014 NARRA Rookie of the Year



**Andy Frost**

Europe's Quickest and Fastest Street Legal Car:  
6.403 @ 229.3 MPH



**Steve Gorman**

Mickey Thompson Outlaw 10.5 National Champion

### **FEED THE BEAST**

Your new Precision turbo needs air to do its job of making tons of power for you and this is where it gets it! We offer a variety of compressor cover options in varying sizes, including ported shroud versions to enhance the map width to ensure your turbocharger is receiving air.

### **BOOST CENTRAL**

Your turbo's compressor wheel creates some seriously awesome boost which is force-fed straight into your engine or your Precision intercooler for maximum power. Don't forget to check out our exclusive CEA® (Competition Engineered Aerodynamics) 2618-forged aluminum and MFS (machined from solid) compressor wheels for an added boost of performance!

### **WHERE THE MAGIC HAPPENS**

Precision's high performance dual ceramic ball bearing turbochargers spool up super quick! Ball bearing turbos offer faster transient response, less lag, and added thrust capacity. We also stock 360° hydrodynamic equipped units, and are happy to work with you to determine which bearing system type will be the best fit for your unique project.

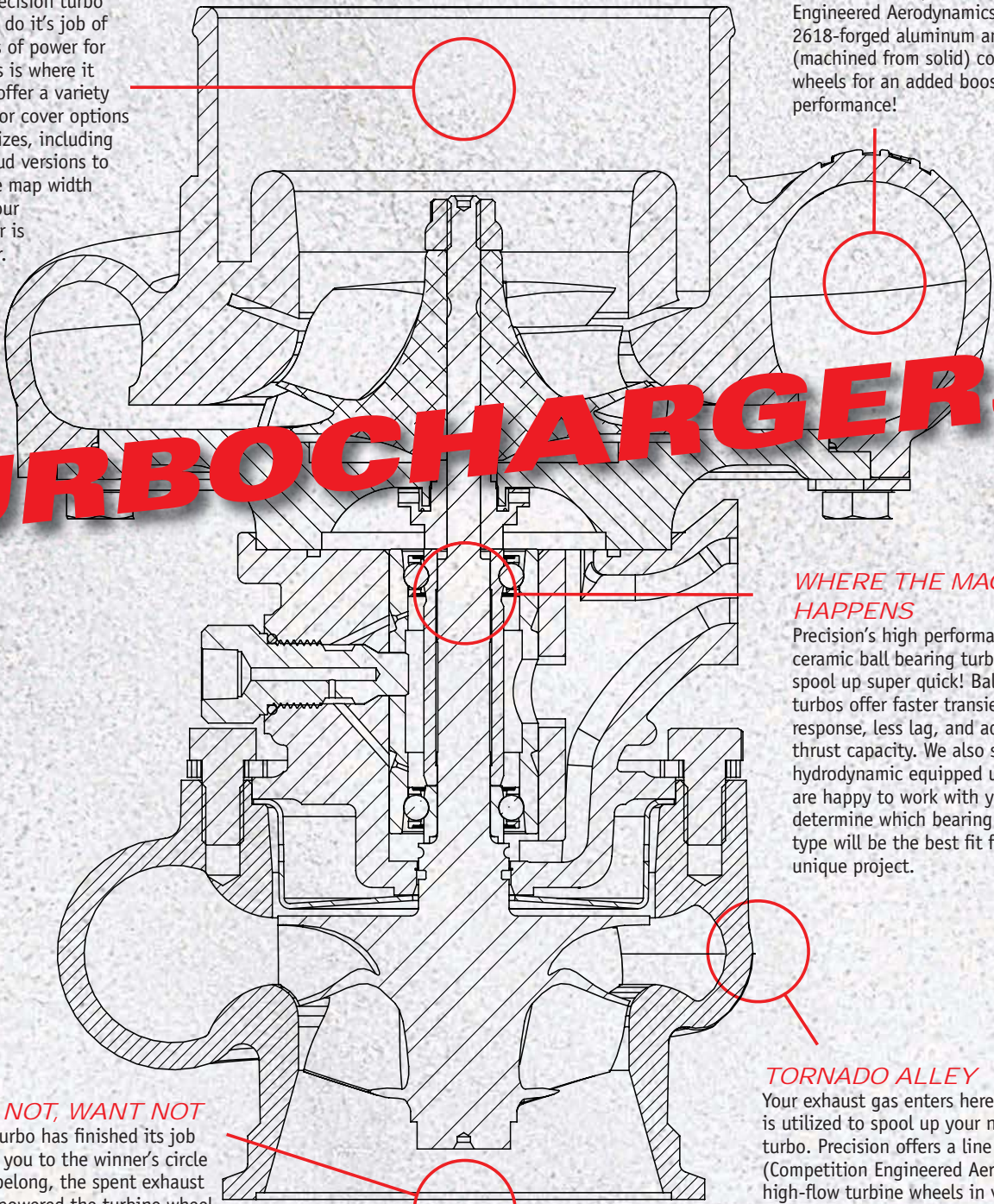
### **TORNADO ALLEY**

Your exhaust gas enters here and is utilized to spool up your new turbo. Precision offers a line of CEA® (Competition Engineered Aerodynamics) high-flow turbine wheels in varying sizes which are specifically engineered to produce massive power gains while reducing lag!

### **WASTE NOT, WANT NOT**

Once your turbo has finished its job of boosting you to the winner's circle where you belong, the spent exhaust gas, which powered the turbine wheel, exits through here. Essentially, you're recycling your wasted air flow into more horsepower! Go you!

# **TURBOCHARGERS**



# TURBOCHARGERS

## 590-640 HP



PTB 205-5558



PTB 505-5858

Part Number	Model Number	Compressor Wheel	Turbine Wheel	Compressor Cover <i>See Page 32</i>	Turbine Housing <i>See Page 29</i>	Ball Bearing Available
<b>590HP</b>						
PTB 205-5558	5558B	2.165" (54.90mm) Ind 3.000" (76.20mm) Exd	2.555" (64.90mm) Ind 2.280" (57.91mm) Exd	CCB	Option Group A	Yes
PTB 305-5558	5558E	2.165" (54.90mm) Ind 3.000" (76.20mm) Exd	2.555" (64.90mm) Ind 2.280" (57.91mm) Exd	CCE	Option Group A	Yes
PTB 505-5558	555SP	2.165" (54.90mm) Ind 3.000" (76.20mm) Exd	2.555" (64.90mm) Ind 2.280" (57.91mm) Exd	CCS	Option Group A	Yes
<b>620HP</b>						
PTB 205-5858	5858B	2.285" (58.00mm) Ind 3.000" (76.20mm) Exd	2.555" (64.90mm) Ind 2.280" (57.91mm) Exd	CCB	Option Group A	Yes
PTB 305-5858	5858E	2.285" (58.00mm) Ind 3.000" (76.20mm) Exd	2.555" (64.90mm) Ind 2.280" (57.91mm) Exd	CCE	Option Group A	Yes
PTB 505-5858	5858SP	2.285" (58.00mm) Ind 3.000" (76.20mm) Exd	2.555" (64.90mm) Ind 2.280" (57.91mm) Exd	CCS	Option Group A	Yes
<b>640HP</b>						
PTB 205-5862	5862B	2.285" (58.00mm) Ind 3.000" (76.20mm) Exd	2.795" (71.00mm) Ind 2.437" (61.90mm) Exd	CCB	Option Group B	Yes
PTB 305-5862	5862E	2.285" (58.00mm) Ind 3.000" (76.20mm) Exd	2.795" (71.00mm) Ind 2.437" (61.90mm) Exd	CCE	Option Group B	Yes
PTB 505-5862	5862SP	2.285" (58.00mm) Ind 3.000" (76.20mm) Exd	2.795" (71.00mm) Ind 2.437" (61.90mm) Exd	CCS	Option Group B	Yes

# TURBOCHARGERS

## 705-900 HP



PTB 515-6266 B



PTB 505-6466

Part Number	Model Number	Compressor Wheel	Turbine Wheel	Compressor Cover <i>See Page 32</i>	Turbine Housing <i>See Page 29</i>	Ball Bearing Available
<b>705HP</b>						
PTB 305-6262	6262E	2.450" (62.23mm) Ind 3.228" (81.99mm) Exd	2.795" (71.00mm) Ind 2.437" (61.90mm) Exd	CCE	Option Group B	Yes
PTB 505-6262	6262SP	2.450" (62.23mm) Ind 3.228" (81.99mm) Exd	2.795" (71.00mm) Ind 2.437" (61.90mm) Exd	CCS	Option Group B	Yes
<b>735HP</b>						
PTB 305-6266	6266E	2.450" (62.23mm) Ind 3.228" (81.99mm) Exd	2.920" (74.17mm) Ind 2.600" (66.00mm) Exd	CCE	Option Group C	Yes
PTB 505-6266	6266SP	2.450" (62.23mm) Ind 3.228" (81.99mm) Exd	2.920" (74.17mm) Ind 2.600" (66.00mm) Exd	CCS	Option Group C	Yes
<b>800HP</b>						
PTB515-6266 B	GEN2 6266SP	2.450" (62.23mm) Ind 3.410" (86.61mm) Exd	2.920" (74.17mm) Ind 2.600" (66.00mm) Exd	CCS	Option Group C	Yes
<b>900HP</b>						
PTB 505-6466	GEN2 6466SP	2.535" (64.39mm) Ind 3.410" (86.61mm) Exd	2.920" (74.17mm) Ind 2.600" (66.00mm) Exd	CCS	Option Group C	Yes



[FACEBOOK.COM/PRECISSIONTURBO](https://www.facebook.com/PrecisionTurbo)

[TWITTER.COM/PRECISSIONTURBO](https://twitter.com/PrecisionTurbo)

[YOUTUBE.COM/PRECISSIONTURBONET](https://www.youtube.com/PrecisionTurboNet)

# TURBOCHARGERS

## 935-1,015 HP



PTB 505-6766



PTB 655-7275

Part Number	Model Number	Compressor Wheel	Turbine Wheel	Compressor Cover <i>See Page 32</i>	Turbine Housing <i>See Page 29</i>	Ball Bearing Available
<b>935HP</b>						
PTB 305-6766	6766E	2.655" (67.44mm) Ind 3.477" (88.32mm) Exd	2.920" (74.17mm) Ind 2.600" (66.00mm) Exd	CCE	Option Group C	Yes
PTB 505-6766	6766SP	2.655" (67.44mm) Ind 3.477" (88.32mm) Exd	2.920" (74.17mm) Ind 2.600" (66.00mm) Exd	CCS	Option Group C	Yes
PTB 605-6766	6766H	2.655" (67.44mm) Ind 3.477" (88.32mm) Exd	2.920" (74.17mm) Ind 2.600" (66.00mm) Exd	CCH	Option Group C	Yes
PTB 655-6766	6766HP	2.655" (67.44mm) Ind 3.477" (88.32mm) Exd	2.920" (74.17mm) Ind 2.600" (66.00mm) Exd	CCH	Option Group C	Yes
<b>985HP</b>						
PTB 605-7175	7175H	2.795" (70.99mm) Ind 3.700" (93.98mm) Exd	3.228" (82.00mm) Ind 2.956" (75.08mm) Exd	CCH	Option Group E	Yes
PTB 655-7175	7175HP	2.795" (70.99mm) Ind 3.700" (93.98mm) Exd	3.228" (82.00mm) Ind 2.956" (75.08mm) Exd	CCH	Option Group E	Yes
PTB 705-7175	PT7175	2.795" (70.99mm) Ind 3.700" (93.98mm) Exd	82.00mm Turbine Wheel 84 Trim	CC2	T4 .98, 1.12, 1.28	Yes
<b>1015HP</b>						
PTB 605-7275	7275H	2.850" (72.40mm) Ind 3.580" (91.00mm) Exd	3.228" (82.00mm) Ind 2.956" (75.08mm) Exd	CCH	Option Group E	Yes
PTB 655-7275	7275HP	2.850" (72.40mm) Ind 3.580" (91.00mm) Exd	3.228" (82.00mm) Ind 2.956" (75.08mm) Exd	CCH	Option Group E	Yes



# TURBOCHARGERS

## 1,100-1,325 HP



PTB 655-6870 B



PTB 655-7675

Part Number	Model Number	Compressor Wheel	Turbine Wheel	Compressor Cover <i>See Page 32</i>	Turbine Housing <i>See Page 29</i>	Ball Bearing Available
<b>1100HP</b>						
PTB 505-6870 B	GEN2 6870SP	2.678" (68.02mm) Ind 3.640" (92.46mm) Exd	3.100" (78.74mm) Ind 2.764" (70.21mm) Exd	CCS	Option Group D	Yes
PTB 655-6870 B	GEN2 6870HP	2.678" (68.02mm) Ind 3.640" (92.46mm) Exd	3.100" (78.74mm) Ind 2.764" (70.21mm) Exd	CCH	Option Group D	Yes
<b>1200HP</b>						
PTB 605-7675	7675H	3.020" (76.71mm) Ind 4.030" (102.36mm) Exd	3.228" (82.00mm) Ind 2.956" (75.08mm) Exd	CCH	Option Group E	Yes
PTB 655-7675	7675HP	3.020" (76.71mm) Ind 4.030" (102.36mm) Exd	3.228" (82.00mm) Ind 2.956" (75.08mm) Exd	CCH	Option Group E	Yes
PTB 150-4240	PT7675 B	3.020" (76.71mm) Ind 4.030" (102.36mm) Exd	82.00mm Turbine Wheel 84 Trim	CC2	T4 .98, 1.12, 1.28	Yes
<b>1250HP</b>						
PTB 700-7685 B	PT7685	3.020" (76.71mm) Ind 4.030" (102.36mm) Exd	3.525" (89.54mm) Ind 3.350" (84.70mm) Exd	CC2	T4 1.12, 1.28	Yes
<b>1325HP</b>						
PTB 605-8285 B	PT8285	3.228" (81.99mm) Ind 4.252" (108.00mm) Exd	3.525" (89.54mm) Ind 3.350" (84.70mm) Exd	CCH	T4 1.12, 1.28	Yes
PTB 700-8285 B	PT8285	3.228" (81.99mm) Ind 4.252" (108.00mm) Exd	3.525" (89.54mm) Ind 3.350" (84.70mm) Exd	CC2	T4 1.12, 1.28	Yes



[FACEBOOK.COM/PRECISIONTURBO](https://www.facebook.com/PrecisionTurbo)

[TWITTER.COM/PRECISIONTURBO](https://twitter.com/PrecisionTurbo)

[YOUTUBE.COM/PRECISIONTURBONET](https://www.youtube.com/PrecisionTurboNet)

# TURBOCHARGERS

## 1,350-1,725 HP



PTB 705-8685 B



PTB 705-8891

Part Number	Model Number	Compressor Wheel	Turbine Wheel	Compressor Cover <i>See Page 32</i>	Turbine Housing <i>See Page 29</i>	Ball Bearing Available
<b>1350HP</b>						
PTB 700-8284	PT8284	3.228" (81.99mm) Ind 4.252" (108.00mm) Exd	3.650" (92.71mm) Ind 3.290" (83.56mm) Exd	CC7	T5 .96, 1.08	Yes
<b>1425HP</b>						
PTB 705-8685 B	GEN2 PT8685	3.386" (86.00mm) Ind 4.409" (112.00mm) Exd	3.525" (89.54mm) Ind 3.350" (84.70mm) Exd	CC2	T4 1.12, 1.28	Yes
<b>1475HP</b>						
PTB 700-8884	PT8884	3.462" (87.93mm) Ind 4.765" (121.03mm) Exd	3.650" (92.71mm) Ind 3.290" (83.56mm) Exd	CC7	T5 .96, 1.08	Yes
<b>1525HP</b>						
PTB 705-8891	PT8891	3.462" (87.93mm) Ind 4.765" (121.03mm) Exd	3.937" (100.00mm) Ind 3.600" (91.44mm) Exd	CC7	T5 .96, 1.08	Yes
<b>1550HP</b>						
PTB 700-5025	PT91.5	3.602" (91.49mm) Ind 5.560" (141.22mm) Exd	F or G Trim Turbine Wheel	CCP	T5 1.0, 1.32 1.50	Yes
<b>1600HP</b>						
PTB 705-8891 B	GEN2 PT8891	3.480" (88.40mm) Ind 4.919" (124.90mm) Exd	3.937" (100.00mm) Ind 3.600" (91.44mm) Exd	CC7	T5 .96, 1.08	Yes
<b>1650HP</b>						
PTB 705-8803 B	GEN2 Pro Mod 88	3.464" (87.99mm) Ind 5.270" (133.90mm) Exd	4.400" (111.76mm) Ind 4.070" (103.38mm) Exd	CC7	Option Group F	Yes
<b>1725HP</b>						
PTB 705-9103 B	GEN2 Pro Mod 91	3.600" (91.44mm) Ind 5.270" (133.90mm) Exd	4.400" (111.76mm) Ind 4.070" (103.38mm) Exd	CC7	Option Group F	Yes

# TURBOCHARGERS

## 1,750-2,800 HP



PTB 705-9803 B

Part Number	Model Number	Compressor Wheel	Turbine Wheel	Compressor Cover <i>See Page 32</i>	Turbine Housing <i>See Page 29</i>	Ball Bearing Available
<b>1750HP</b>						
PTB 700-5515	PT94	3.700" (93.98mm) Ind 5.560" (141.22mm) Exd	F or G Trim Turbine Wheel	CCP	T5 1.0, 1.32 1.50	Yes
<b>1875HP</b>						
PTB 705-9403 B	GEN2 Pro Mod 94	3.700" (93.98mm) Ind 5.270" (133.90mm) Exd	4.400" (111.76mm) Ind 4.070" (103.38mm) Exd	CC7	Option Group F	Yes
<b>1950HP</b>						
PTB 700-5100	PT98	3.858" (97.99mm) Ind 5.560" (141.22mm) Exd	F or G Trim Turbine Wheel	CCP	T5 1.0, 1.32 1.50	Yes
<b>2000HP</b>						
PTB 705-9803 B	GEN2 Pro Mod 98	3.860" (98.04mm) Ind 5.270" (133.90mm) Exd	4.400" (111.76mm) Ind 4.070" (103.38mm) Exd	CC7	Option Group F	Yes
<b>2100HP</b>						
PTB 700-5125	PT101	4.000" (101.60mm) Ind 5.560" (141.22mm) Exd	F or G Trim Turbine Wheel	CCP	T5 1.0, 1.32 1.50	Yes
<b>2250HP</b>						
PTB 705-10205 B	GEN2 Pro Mod 102	4.000" (101.59mm) Ind 5.600" (142.23mm) Exd	4.520" (114.81mm) Ind 4.150" (105.41mm) Exd	CC7	Option Group F	Yes
<b>2500HP</b>						
PTB 705-5520	PT106	4.160" (105.66mm) Ind 5.560" (141.22mm) Exd	G Trim Turbine Wheel	CCP	T5 1.0, 1.32 1.50	Yes
<b>2800HP</b>						
PTB 700-5200	PT118	4.645" (117.98mm) Ind 5.894" (149.71mm) Exd	G Trim Turbine Wheel	CCP	T5 1.0, 1.32 1.50	Yes



[FACEBOOK.COM/PRECISIONTURBO](https://www.facebook.com/precisionturbo)

[TWITTER.COM/PRECISIONTURBO](https://twitter.com/precisionturbo)

[YOUTUBE.COM/PRECISIONTURBONET](https://www.youtube.com/precisionturbonet)

# TURBOCHARGERS • BUICK / PONTIAC / GMC

Since the early 1990s, Precision Turbo has supported both the turbo Buick/Pontiac and GMC Syclone/Typhoon platforms with innovative turbochargers for both the street and strip. As we continue to advance our turbocharger technology, we are dedicated to supporting these markets by offering the most technologically

advanced products available. Whether you are looking for a stock replacement turbo or an upgraded one to race at the track, our Sales/Technical Representatives are here to help you choose the best turbocharger for your application. Give us a call today to discuss your application.



PTB 105-6262



PT67 SY/ITY

Part Number	Model Number	Compressor Wheel	Turbine Wheel	Compressor Cover	Turbine Housing	Ball Bearing Available
<b>570HP</b>						
PTB 001-5931	TA60	2.320" (58.92mm) Ind 3.000" (76.20mm) Exd	2.559" (65.00mm) Ind 2.228" (56.59mm) Exd	Buick Stock Appearing	.63 A/R	No
<b>610HP</b>						
PTB 105-5858	TA58	2.285" (58.00mm) Ind 3.000" (76.20mm) Exd	2.555" (64.90mm) Ind 2.280" (57.91mm) Exd	Buick Stock Appearing	.63 A/R	Yes
<b>675HP</b>						
PTB 105-6262	TA62	2.450" (62.23mm) Ind 3.228" (81.99mm) Exd	2.795" (71.0mm) Ind 2.437" (61.90mm) Exd	Buick Stock Appearing	.63 and .85 A/R	Yes
<b>695HP</b>						
PTB105-6266	TA62	2.450" (62.23mm) Ind 3.228" (81.99mm) Exd	2.920" (74.17mm) Ind 2.600" (66.00mm) Exd	Buick Stock Appearing	.63 and .85 A/R	Yes



# TURBOCHARGERS • SUBARU / FORD

## Subaru WRX Bolt-On Turbo

Precision's new Bolt-On Turbo is capable of supporting over 525 horsepower and designed to be an easy bolt-on install for 2002+ Subaru WRX and 2004+ Subaru WRX STi vehicles. It also fits the 2004-2007 Subaru Forester.

Featuring Precision's **most advanced and innovative technology**, this new turbocharger utilizes a 55mm Competition Engineered Aerodynamics (CEA®) CNC-machined, 2618-forged aluminum compressor wheel specifically designed for maximum performance and less turbo lag along with a high-performance liquid-cooled, dual ceramic ball bearing Center Housing Rotating Assembly (CHRA) for faster transient response and added thrust capacity.



## Ford EcoBoost Turbo Upgrade

Precision's Ford F150 EcoBoost turbocharger upgrade package, available exclusively through Walsh Motorsports, **upgrades the existing factory turbocharger compressor wheel and components**. This ensures a simple bolt-on installation. The result is more horsepower, increased torque, and lower air inlet temperatures than the stock units for improved performance.

Additionally, Precision's cost effective core-exchange program lets customers get more power quickly and easily without having to deal with downtime or spending a fortune.



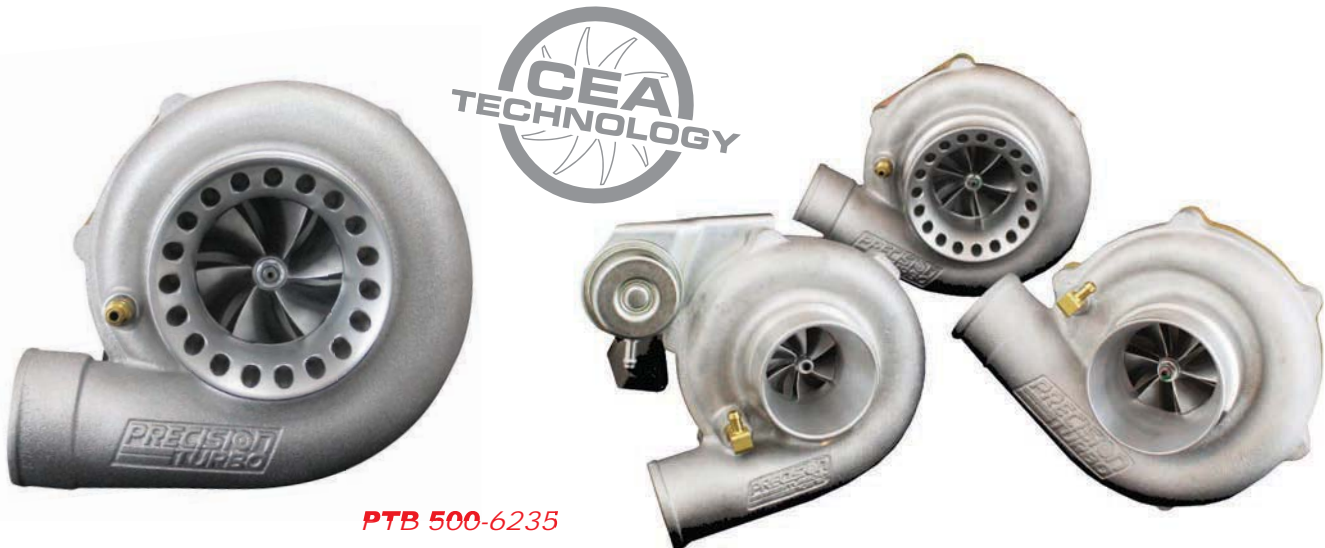
[FACEBOOK.COM/PRECISIONTURBO](https://www.facebook.com/PrecisionTurbo)

[TWITTER.COM/PRECISIONTURBO](https://www.twitter.com/PrecisionTurbo)

[YOUTUBE.COM/PRECISIONTURBONET](https://www.youtube.com/PrecisionTurboNet)

# TURBOCHARGERS • DIRECT REPLACEMENT

Precision Turbo is proud to introduce our line of direct-fit upgrade replacement Turbochargers with our unique CEA® (Competition Engineered Aerodynamics) 2618 forged aluminum compressor wheels. These turbochargers are specifically designed to out-perform turbos of the same size from other suppliers, while delivering greater efficiency and less turbo lag. All direct fit replacement turbochargers feature a liquid-cooled, dual ceramic ball bearing CHRA for maximum performance, and are available in various compressor cover and turbine housing options to ensure a direct fit.



**PTB 500-6235**

Part Number	Model Number	Compressor Wheel	Turbine Wheel	Exhaust Housing	Ball Bearing Option Available
<b>400HP</b>					
PTB 205-4828 B	PT4828	1.890" Ind/2.366" Exd	53.80mm Turbine Wheel 76 Trim	Option Group I	Yes
<b>450HP</b>					
PTB 205-5128 B	PT5128	2.008" Ind/2.520" Exd	53.80mm Turbine Wheel 76 Trim	Option Group I	Yes
PTB 305-5128 B	PT5128	2.008" Ind/2.520" Exd	53.80mm Turbine Wheel 76 Trim	Option Group I	Yes
<b>460HP</b>					
PTB 205-5130 B	PT5130	2.008" Ind/2.520" Exd	56.50mm Turbine Wheel 84 Trim	Option Group J	Yes
PTB 305-5130 B	PT5130	2.008" Ind/2.520" Exd	56.50mm Turbine Wheel 84 Trim	Option Group J	Yes
<b>525HP</b>					
PTB 205-5530 B	PT5530	2.165" Ind/3.00" Exd	56.50mm Turbine Wheel 84 Trim	Option Group J	Yes
PTB 305-5530 B	PT5530	2.165" Ind/3.00" Exd	56.50mm Turbine Wheel 84 Trim	Option Group J	Yes
PTB 505-5530 B	PT5530	2.165" Ind/3.00" Exd	56.50mm Turbine Wheel 84 Trim	Option Group J	Yes
<b>600HP</b>					
PTB 205-5830 B	PT5830	2.285" Ind/3.00" Exd	56.50mm Turbine Wheel 84 Trim	Option Group J	Yes
PTB 305-5830 B	PT5830	2.285" Ind/3.00" Exd	56.50mm Turbine Wheel 84 Trim	Option Group J	Yes
PTB 505-5830 B	PT5830	2.285" Ind/3.00" Exd	56.50mm Turbine Wheel 84 Trim	Option Group J	Yes
<b>700HP</b>					
PTB 205-6235 B	PT6235	2.45" Ind/3.228" Exd	68.00mm Turbine Wheel 84 Trim	Option Group K	Yes
PTB 305-6235 B	PT6235	2.45" Ind/3.228" Exd	68.00mm Turbine Wheel 84 Trim	Option Group K	Yes
PTB 505-6235 B	PT6235	2.45" Ind/3.228" Exd	68.00mm Turbine Wheel 84 Trim	Option Group K	Yes

# TURBOCHARGERS • CLASS LEGAL

Racing is easy - it's winning that can be the challenge.

Precision Turbo has a longstanding history of building turbochargers that win and we know what it takes to put together the perfect unit to boost you ahead of the competition. Success doesn't come from a standard off-the-shelf turbocharger; it comes from years of dedicated

research, development, real-world racing experience, and collaboration with sanctioning bodies to develop the best turbos on the market, period. Our customers have won championships and set records in practically every racing sanctioning body in existence and we're committed to helping you build the quickest and fastest race cars possible.



*GEN2 PRO MOD 85*  
for X275



*PT6785 CEA®*  
for MIR Super Street, True Street, and OGS SFWD

Part Number	Model Number	Compressor Wheel	Turbine Wheel	Compressor Cover <i>See Page 32</i>	Turbine Housing <i>See Page 29</i>	Ball Bearing Available
<b>1000HP NSCRA SPORT FRONT WHEEL DRIVE TURBOCHARGER</b>						
PTB 705-6785 B	PT6785	2.666" (67.70mm) Ind 4.030" (102.00mm) Exd	3.525" (89.54mm) Ind 3.350" (84.70mm) Exd	CC2	T4 1.12, 1.28	Yes
<b>1100HP NSCRA SPORT FRONT WHEEL DRIVE TURBOCHARGER</b>						
PTB 700-7285 B	PT7285	2.820" (71.63mm) Ind 4.030" (102.36mm) Exd	3.525" (89.54mm) Ind 3.350" (84.70mm) Exd	CC2	T4 1.12, 1.28	Yes
<b>1500HP X275 DRAG RADIAL 85MM TURBOCHARGER</b>						
22616430479	GEN2 PM85	3.346" (84.99mm) Ind 5.270" (133.90mm) Exd	4.400" (111.76mm) Ind 4.070" (103.38mm) Exd	CC7	T5 1.40	Yes
<b>1600HP X275 DRAG RADIAL 88MM TURBOCHARGER</b>						
PTB 705-5500	X275 88	3.462" (87.93mm) Ind 5.560" (141.30mm) Exd	F or G Trim Turbine Wheel	CCP	T4 1.0, 1.32, 1.50	Yes
<b>1725HP NMRA STREET OUTLAW TURBOCHARGER</b>						
PTB 705-5515	PT94	3.700" (93.98mm) Ind 5.560" 141.30mm) Exd	F or G Trim Turbine Wheel	CCP	T4 1.0, 1.32, 1.50	Yes

## WE HAVE MORE CLASS LEGAL TURBOCHARGERS!

This is only a small portion of the Class Legal Turbochargers that we offer. If you don't see what you need, please give us a call and one of our friendly Sales/Technical Representatives would be glad to assist you.



[FACEBOOK.COM/PRECISIONTURBO](https://www.facebook.com/precisionturbo)

[TWITTER.COM/PRECISIONTURBO](https://twitter.com/precisionturbo)

[YOUTUBE.COM/PRECISIONTURBONET](https://www.youtube.com/precisionturbonet)

# ENTRY LEVEL TURBOCHARGERS • 385-565 HP

**Are you trying to put together a cost-effective turbocharger system for your vehicle?**

We have just what you are looking for. Precision Turbo's line of Entry Level Turbochargers provides the perfect

solution by delivering a high quality product for those on a budget. With several units to choose from, as well as numerous turbine housing options, Precision Turbo has you covered!



PTB 003-5431



PTB 002-4831

Part Number	Model Number	Compressor Wheel	Turbine Wheel	Compressor Cover <i>See Page 32</i>	Turbine Housing <i>See Page 32</i>	Ball Bearing Available
<b>385HP</b>						
PTB 002-4831	4831B	1.904" (49.27mm) Ind 2.755" (70.00mm) Exd	2.559" (65.00mm) Ind 2.228" (56.59mm) Exd	CCB	Option Group G	No
<b>500HP</b>						
PTB 003-5431	5431E	2.123" (53.92mm) Ind 2.950" (74.93mm) Exd	2.559" (65.00mm) Ind 2.228" (56.59mm) Exd	CCE	Option Group G	No
<b>520HP</b>						
PTB 003-5531	5531E	2.170" (55.12mm) Ind 2.950" (74.93mm) Exd	2.559" (65.00mm) Ind 2.228" (56.59mm) Exd	CCE	Option Group G	No
<b>565HP</b>						
PTB 003-5731	5731E	2.230" (56.64mm) Ind 2.950" (74.93mm) Exd	2.559" (65.00mm) Ind 2.228" (56.59mm) Exd	CCE	Option Group G	No





# ENTRY LEVEL TURBOCHARGERS • 585-670 HP



PTB 003-5976



PTB 003-5931

Part Number	Model Number	Compressor Wheel	Turbine Wheel	Compressor Cover <i>See Page 32</i>	Turbine Housing <i>See Page 32</i>	Ball Bearing Available
<b>585HP</b>						
PTB 003-5831	5831E	2.290" (58.16mm) Ind 2.950" (74.93mm) Exd	2.559" (65.00mm) Ind 2.228" (56.59mm) Exd	CCE	Option Group G	No
<b>600HP</b>						
PTB 003-5931	5931E	2.320" (58.92mm) Ind 3.000" (76.20mm) Exd	2.559" (65.00mm) Ind 2.228" (56.59mm) Exd	CCE	Option Group G	No
<b>620HP</b>						
PTB 003-5976	5976E	2.320" (58.92mm) Ind 3.000" (76.20mm) Exd	2.920" (74.17mm) Ind 2.542" (64.56mm) Exd	CCE	Option Group H	No
<b>670HP</b>						
PTB 003-6176	6176E	2.416" (61.37mm) Ind 3.227" (81.97mm) Exd	2.920" (74.17mm) Ind 2.542" (64.56mm) Exd	CCE	Option Group H	No
PTB 004-6176	6176S	2.416" (61.37mm) Ind 3.227" (81.97mm) Exd	2.920" (74.17mm) Ind 2.542" (64.56mm) Exd	CCS	Option Group H	No



[FACEBOOK.COM/PRECISIONTURBO](https://www.facebook.com/PrecisionTurbo)

[TWITTER.COM/PRECISIONTURBO](https://twitter.com/PrecisionTurbo)

[YOUTUBE.COM/PRECISIONTURBONET](https://www.youtube.com/PrecisionTurboNet)

# ENTRY LEVEL TURBOCHARGERS • 775-1,170 HP



PTB 003-6176



PTB 006-7275

Part Number	Model Number	Compressor Wheel	Turbine Wheel	Compressor Cover <i>See Page 32</i>	Turbine Housing <i>See Page 32</i>	Ball Bearing Available
<b>775HP</b>						
PTB 003-6776	6776E	2.620" (66.55mm) Ind 3.310" (84.07mm) Exd	2.920" (74.17mm) Ind 2.542" (64.56mm) Exd	CCE	Option Group H	No
<b>885HP</b>						
PTB 006-7075	7075H	2.756" (70.00mm) Ind 3.502" (88.95mm) Exd	3.228" (82.00mm) Ind 2.956" (75.08mm) Exd	CCH	Option Group E	No
<b>985HP</b>						
PTB 006-7275	7275H	2.864" (72.75mm) Ind 4.030" (102.36mm) Exd	3.228" (82.00mm) Ind 2.956" (75.08mm) Exd	CCH	Option Group E	No
<b>1060HP</b>						
PTB 006-7475	7475H	2.941" (74.70mm) Ind 4.030" (102.36mm) Exd	3.228" (82.00mm) Ind 2.956" (75.08mm) Exd	CCH	Option Group E	No
<b>1170HP</b>						
PTB 700-3000	PT80H	3.178" (80.72mm) Ind 4.250" (107.95mm) Exd	Turbine Wheel Varies By Application	CCH	T4 .96 A/R	No



# ENTRY LEVEL TURBOCHARGERS • 1,225-1,400 HP



PTB 700-3029



PTB 700-3025

Part Number	Model Number	Compressor Wheel	Turbine Wheel	Compressor Cover <i>See Page 32</i>	Turbine Housing <i>See Page 32</i>	Ball Bearing Available
<b>1225HP</b>						
PTB 700-3029	PT8047H	3.182" (80.82mm) Ind 4.252" (108.00mm) Exd	3.650" (92.71mm) Ind 3.290" (83.56mm) Exd	CCH	T4.96 A/R	No
<b>1250HP</b>						
PTB 700-3025	PT88H	3.420" (86.87mm) Ind 4.268" (108.41mm) Exd	Turbine Wheel Varies By Application	CCH	T4.96 A/R	No
<b>1400HP</b>						
PTB 700-3027	PT8847H	88.00mm Ind 118.00mm Exd	3.650" (92.71mm) Ind 3.290" (83.56mm) Exd	CCH	T4.96 A/R	No



[FACEBOOK.COM/PRECISIONTURBO](https://www.facebook.com/PrecisionTurbo)

[TWITTER.COM/PRECISIONTURBO](https://twitter.com/PrecisionTurbo)

[YOUTUBE.COM/PRECISIONTURBONET](https://www.youtube.com/PrecisionTurboNet)

# TURBINE HOUSING OPTIONS

## TURBINE HOUSING OPTIONS

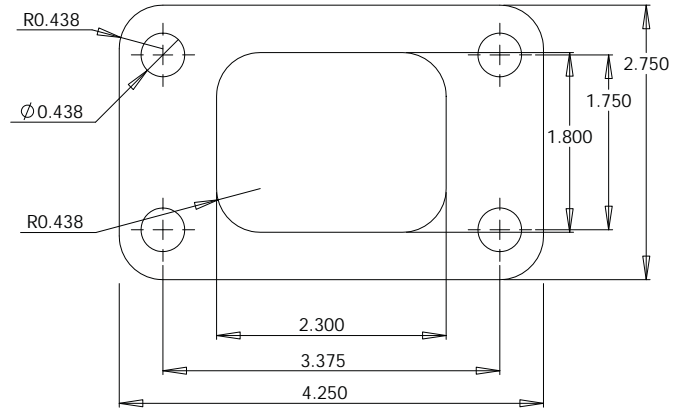
There's more to finding the right turbo than just picking the horsepower that you want to make. Proper selection takes into account a variety of different factors in order to get you the best turbo for your project. Choosing the right compressor cover and turbine housing is a big part of the equation. Precision Turbo is well known for having one of the widest selections of housings for both sides of the turbocharger to ensure great fit and performance.

Precision Turbo offers turbochargers with T25, T3, T4, T5, and V-band exhaust inlets.

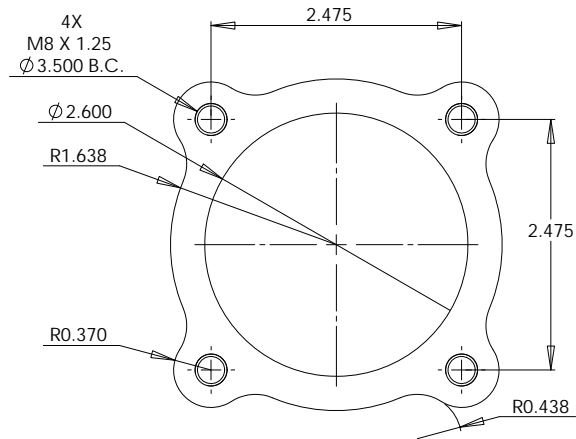
T3 inlet turbine housings come with your choice of 4-bolt, 5-bolt, or V-band outlets in various A/R's. Precision Turbo's T4 housings utilize a V-band outlet connection.

Precision Turbo offers a variety of T4 housings in tangential style castings (both divided and undivided) with various A/R's to fit a wide range of applications.

*T3 INLET*

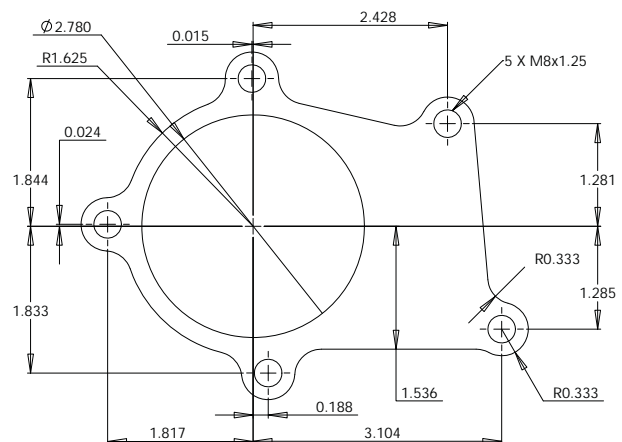
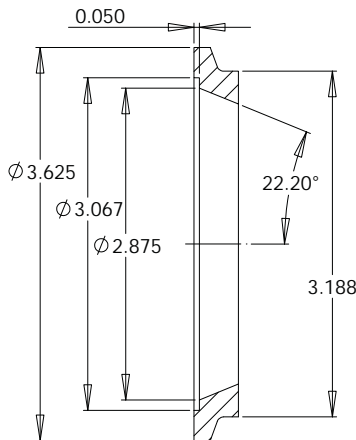


*T3 4-BOLT DISCHARGE*



*T3 5-BOLT DISCHARGE*

*THGT V-BAND DISCHARGE*



<i>TURBINE HOUSING KEY</i>	
STYLE	A/Rs
<i>TURBINE HSG OPTION GROUP A CEA® 58</i>	
MITSU	.63 (W, WD, N)
BUICK	0.63
GMC Cyclone/Typhoon	0.85
T3 5-BOLT	.48, .63 (W)
T3 4-BOLT	.48, .63, .82
T3 V-BAND	.63, .82
V-BAND IN/OUT	.64, .82
SS V-BAND IN/OUT	0.82
T4-V-BAND	0.58
<i>TURBINE HSG OPTION GROUP B CEA® 62</i>	
MITSU	.63 (W, WD, N)
BUICK	0.63, .85
GMC Cyclone/Typhoon	0.85
T3 5-BOLT	.63 (W)
T3 4-BOLT	.63, .82
T3 V-BAND	.63, .82
V-BAND IN/OUT	.64, .82
SS V-BAND IN/OUT	0.82
T4 V-BAND	.58, .68
T4 V-BAND DIVIDED	0.84
<i>TURBINE HSG OPTION GROUP C CEA® 66</i>	
MITSU	N/A
BUICK	0.63, .85
GMC Cyclone/Typhoon	0.85
T3 5-BOLT	.63 (W)
T3 4-BOLT	.63, .82
T3 V-BAND	.63, .82
V-BAND IN/OUT	0.82
SS V-BAND IN/OUT	0.82
T4 V-BAND	.58, .68, .81, .96
T4 V-BAND DIVIDED	.84, 1.0, 1.15, 1.32
<i>TURBINE HSG OPTION GROUP D CEA® 70</i>	
MITSU	N/A
BUICK	N/A
GMC Cyclone/Typhoon	N/A
T3 5-BOLT	N/A
T3 4-BOLT	N/A

STYLE	A/Rs
<i>TURBINE HSG OPTION GROUP D CEA® 70 CONT.</i>	
T3 V-BAND	1.06
T4 V-BAND	.68, .81, .96
T4 V-BAND DIVIDED	1.0, 1.15, 1.32
<i>TURBINE HSG OPTION GROUP E HPS</i>	
MITSU	N/A
BUICK	N/A
GMC Cyclone/Typhoon	N/A
T3 5-BOLT	N/A
T3 4-BOLT	N/A
T3 V-BAND	N/A
T4 V-BAND	.81, .96
<i>TURBINE HSG OPTION GROUP F CEA® 102</i>	
SS V-BAND IN/OUT	1.15
T5 V-BAND	1.0, 1.12, 1.24, 1.40
<i>TURBINE HSG OPTION GROUP G 57</i>	
BUICK	.63
T3 4-BOLT	.48, .63, .82
T3 5-BOLT	.48, .63 (W)
<i>TURBINE HSG OPTION GROUP H 65</i>	
BUICK	.63, .85
T3 4-BOLT	.63, .82
T3 5-BOLT	.63 (W)
T4 V-BAND	.58, .68, .81, .96
<i>TURBINE HSG OPTION GROUP I PT28</i>	
T25	.64, .86
T3 5-BOLT	.48 (W)
<i>TURBINE HSG OPTION GROUP J PT30</i>	
T25	.64, .86
T3 4-BOLT (3")	.63, .82, 1.06
T3 5- BOLT	.63 (W)
V-BAND IN/OUT	.64, .82
<i>TURBINE HSG OPTION GROUP K PT35</i>	
T3 4-BOLT (3")	.63, .82, 1.06
T3 4-BOLT (2.5")	.63, .82
T3 5- BOLT	.63 (W)
T4 V-BAND	0.68



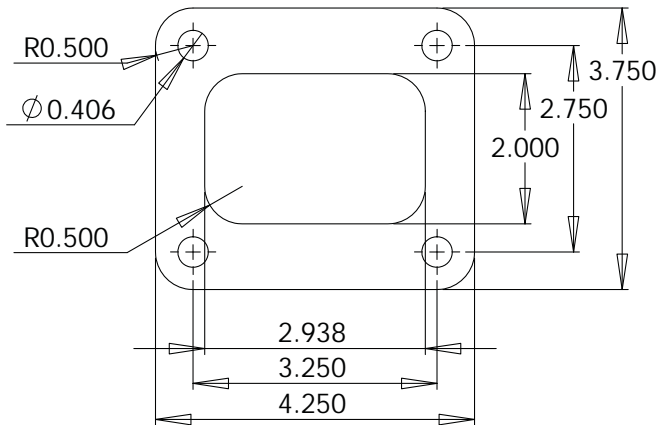
[FACEBOOK.COM/PRECISIONTURBO](https://www.facebook.com/PrecisionTurbo)

[TWITTER.COM/PRECISIONTURBO](https://www.twitter.com/PrecisionTurbo)

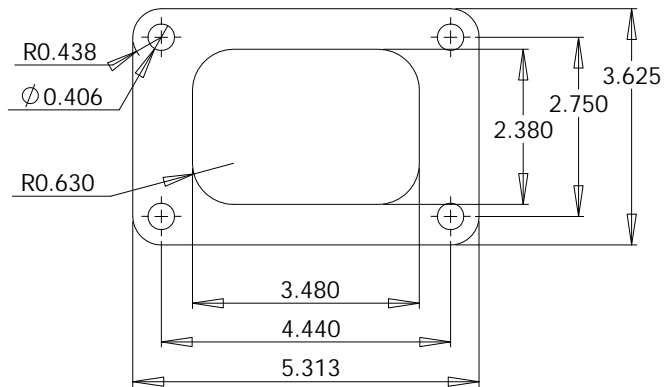
[YOUTUBE.COM/PRECISIONTURBONET](https://www.youtube.com/PrecisionTurboNet)

# TURBINE HOUSING TECH

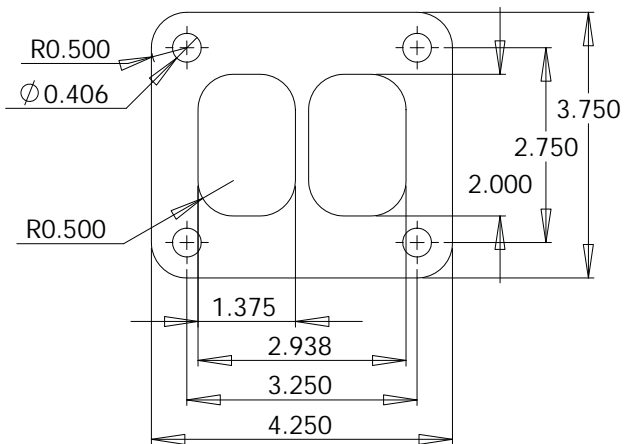
T4 INLET



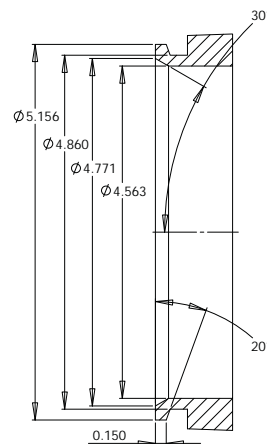
T5 INLET



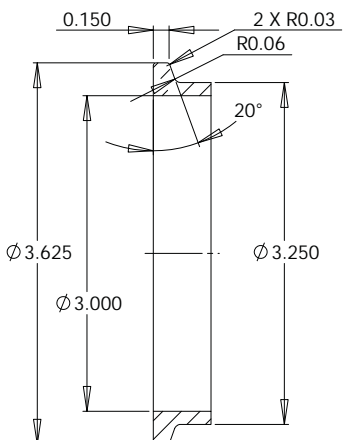
T4 DIVIDED INLET



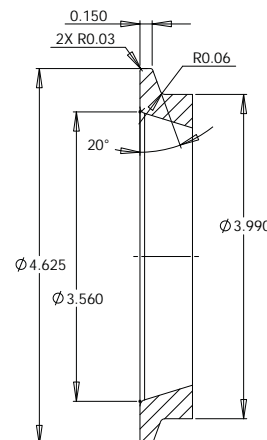
T5 DISCHARGE



T4 DISCHARGE

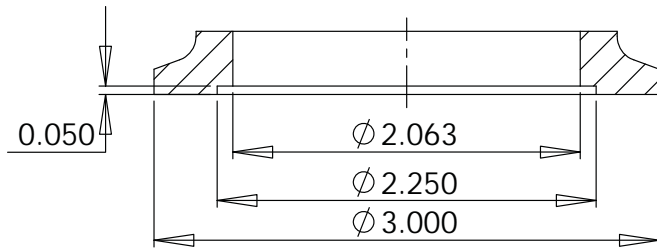


GT42 DISCHARGE

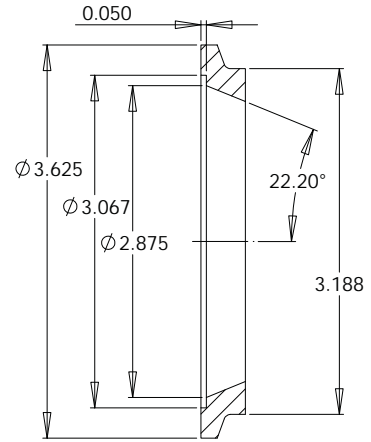


# TURBINE HOUSING TECH

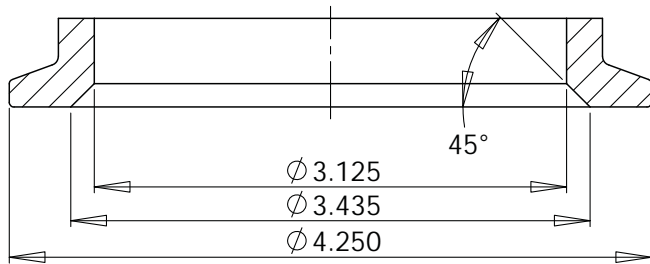
THV INLET



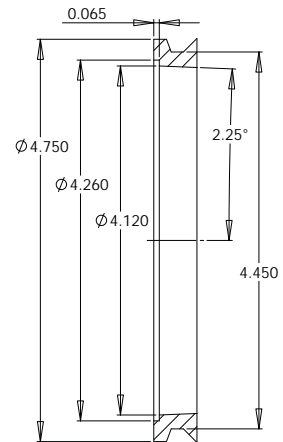
THV OUTLET



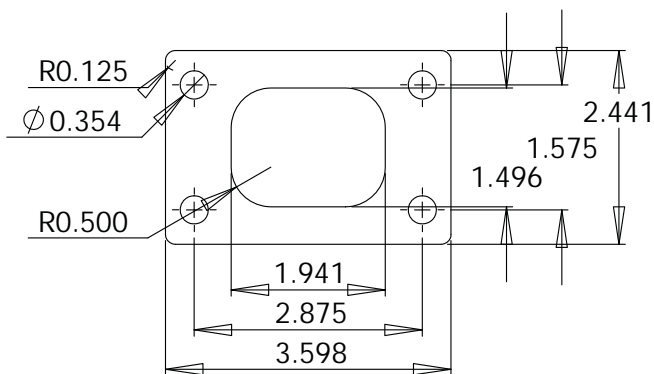
PRO MOD INLET



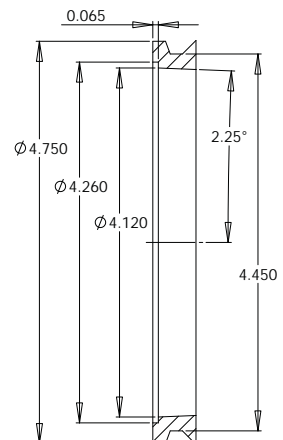
PRO MOD DISCHARGE



T25 INLET



T25 DISCHARGE



[FACEBOOK.COM/PRECISIONTURBO](https://www.facebook.com/precisionturbo)

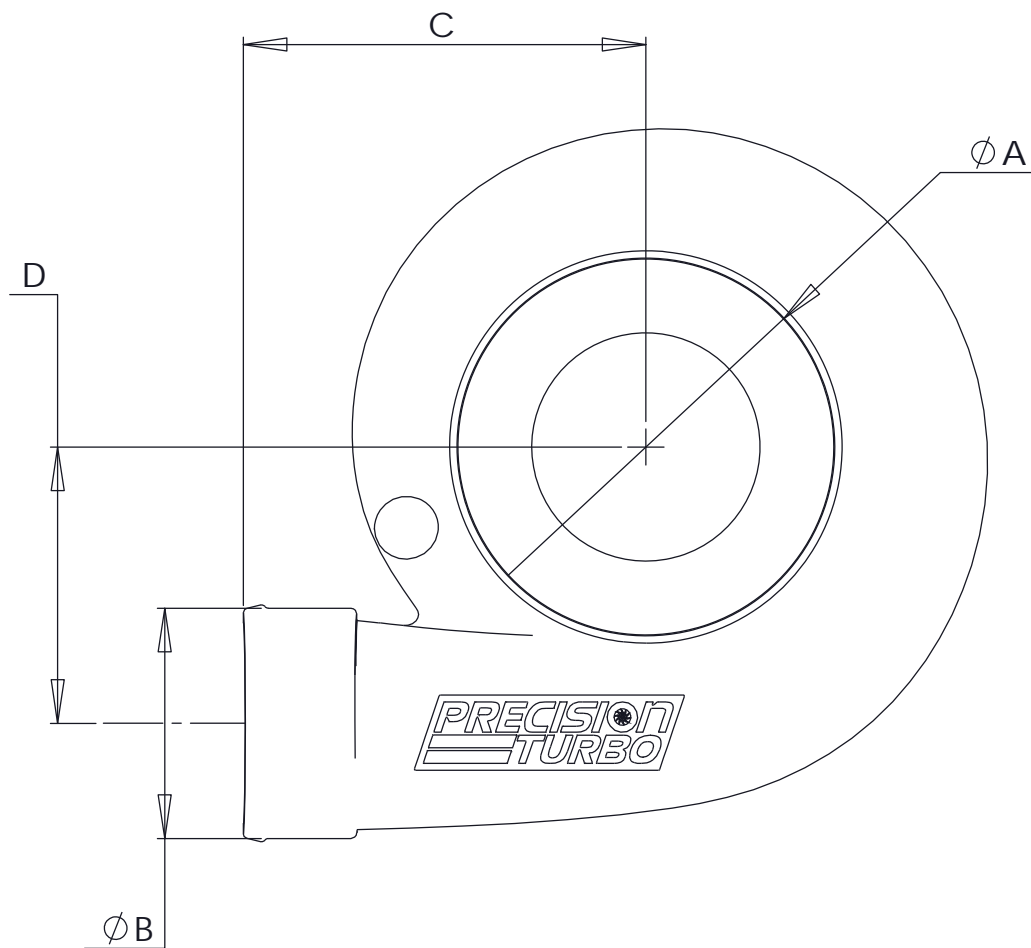
[TWITTER.COM/PRECISIONTURBO](https://twitter.com/precisionturbo)

[YOUTUBE.COM/PRECISIONTURBONET](https://www.youtube.com/channel/UC...)

# COMPRESSOR COVERS

Precision Turbo offers a variety of compressor covers with different inlet/outlet configurations for most turbochargers. Ported shroud compressor covers are

available on larger model turbo-chargers to help alleviate compressor surge. If you need further information, please contact one of our Sales/Technical Representatives.



## COMPRESSOR HOUSING DIMENSIONS

Compressor Housing	A Inlet	B Outlet	C	D	Ported Shroud Available
CCB__	2.8	2.0	4.25	2.25	NO
CCE__	3.0	2.0	4.35	2.25	NO
CCS__	4.0	2.5	4.35	3.00	YES
CCH__	4.0	3.0	5.45	3.10	YES
CC42__	5.0	4.2 V-BAND	4.85	4.25	YES
CC10__	5.0	4.2 V-BAND	4.80	4.95	YES
CCP__	7.0	4.0	5.75	5.45	YES*

\*ONLY AVAILABLE ON SPECIFIC MODELS



# **ACCESSORIES** **BOOST** **CONTROLLERS** **INTERCOOLERS**



# TURBOCHARGER ACCESSORIES



## FLANGES

Part Number	Description
<b>INLET FLANGES</b>	
PTP074-1008	T3 Inlet Flange (SS)
PTP074-1011	T4 Inlet Flange (MS)
PTP074-1014	Large Frame Inlet Flange (MS)
PTP074-1017	Buick 3 Bolt to T4 Bolt Adapter (MS)
PTP074-1030	T3 V-band Inlet Flange (SS)
PTP074-1050	Pro Mod V-band Inlet Flange (SS)
<b>DISCHARGE FLANGES</b>	
PTP074-3002	T25 Exhaust Discharge Weld Flange (MS)
PTP074-3050	V-Band Discharge Flange f/PTE Housings (SS)
PTP074-3005	4 Bolt Discharge Weld Flange (MS)
PTP074-3008	5 Bolt Discharge Weld Flange (SS)
PTP074-3010	GT30R/GT35R 4 Bolt Discharge Weld Flange (SS)
PTP074-3012	3" V-Band Discharge Weld Flange (SS)
PTP074-3014	3 5/8" Steel Weld Tube for Downpipe (MS)
PTP074-3036	3 5/8" Weld Flange for 3" or 3.5" DP (SS)
PTP074-3020	4" On-Center Weld Flange (MS)
PTP074-3023	4" V-Band Discharge Weld Flange (MS)
PTP074-3029	5" V-Band Discharge Weld Flange (MS)
PTP074-3042	Comp. Discharge Flange for GT42/45/47/55 (ALUM)
PTP074-3044	Comp. Discharge Flange for GT42/45/47/55 (MS)
PTP074-3045	Turbine Outlet Flange for GT42 (SS)
PTP074-3050	T3 V-Band Turbine Discharge Flange
PTP074-3062	Pro Mod 4" Turbine Discharge Flange (MS)
PTP074-3066	Pro Mod 4.5" Turbine Discharge Flange (MS)
PTP074-3067	Pro Mod 4.5" Turbine Discharge Flange (SS)
<b>OIL DRAIN FLANGES</b>	
PTP074-2004	Med/Large Frame Oil Drain Flange -10AN
PTP074-2008	Small Frame Oil Drain Flange -10AN
PTP074-2011	T3/T4 Oil Drain Flange 1/2" NPT
PTP074-2013	T3/T4 Oil Drain Flange 3/8" NPT
PTP074-2017	GT28R/GT30R/GT35R/GT42R Oil Drain Flange
PTP074-1050	Pro Mod V-band Inlet Flange (SS)

## CLAMPS

Part Number	Size	Style
<b>CLAMPS</b>		
PTP071-1005	2.00" - 2.50"	T-bolt clamp
PTP071-1008	2.25" - 2.75"	T-bolt clamp
PTP071-1011	2.50" - 3.00"	T-bolt clamp
PTP071-1017	3.00" - 3.50"	T-bolt clamp
PTP071-1020	3.25" - 3.75"	T-bolt clamp
PTP071-1021	3.88" - 4.19"	T-bolt clamp
PTP071-1023	4.00"	T-bolt clamp
PTP071-1026	3.00"	V-band clamp
PTP071-1027	3.00"	V-Band clamp
PTP071-1029	3 5/8"	V-band clamp
PTP071-1032	4 1/2"	V-band clamp
PTP071-1035	5 1/4"	V-band clamp
PTP071-1038	Gt42 Turbine Discharge Flange	V-band clamp
PTP071-1041	Gt42 Comp Discharge Flange	V-band clamp
PTP071-1061	Pro Mod Turbine Housing Inlet	V-band clamp
PTP071-1064	Pro Mod Turbine Housing Discharge	V-band clamp



PTT 2EL  
2" Elbow

PTT 2.5 EL  
2.5" Elbow

PTT 3EL  
3" Elbow

## WELD ON ALUMINUM ELBOWS

Part Number	Size (Diameter)
PTP073-2000	2.00"
PTP073-2500	2.50"
PTP073-3000	3.00"

# TURBOCHARGER ACCESSORIES

PTP076-3000 - 2"/2.5"



PTP076-3004 - 2"/3"



PTP076-3006 - 2.5"/3"



PTP076-3009 - 2.5"/3"



PTP076-3012 - 3"/3.5"



PTP076-3015 - 3"/4"



## HOSES

Part Number	I.D. Size	Color	UOM
<b>STRAIGHT HOSES 4-PLY NOMEK SILICONE</b>			
PTP076-2000	2"	Black	Inch
PTP076-2003	2.5"	Black	Inch
PTP076-2006	3"	Black	Inch
PTP076-2009	4"	Black	Inch
PTP076-2012	3"	Black	4" long
PTP076-2015	3"	Black	5" long
<b>REDUCER HOSES 4-PLY NOMEK SILICONE</b>			
PTP076-3000	2" to 2.5"	Black	3" long
PTP076-3003	2" to 3"	Black	3" long
PTP076-3004	2" to 3"	Black	6" long
PTP076-3006	2.5" to 3"	Black	5" long
PTP076-3009	2.5" to 3"	Black	3" long
PTP076-3012	3" to 3.5"	Black	3" long
PTP076-3015	3" to 4"	Black	4" long
PTP076-3018	3.5" to 4"	Black	3" long
PTP076-3020	3.625" to 3"	Black	3 1/4" long
PTP076-3022	3.825" to 3"	Black	3 1/4" long

Part Number	I.D. Size	Color	UOM
<b>HUMP HOSES 4-PLY NOMEK SILICONE</b>			
PTP076-4000	2.00" ID x 3"	Black	3 1/8" long
PTP076-4002	2.50" ID x 3"	Black	3 1/8" long
PTP076-4004	3.00" ID x 3"	Black	3 1/8" long
PTP076-4006	3.50" ID x 3"	Black	3 1/8" long
<b>ELBOW HOSES 4-PLY NOMEK SILICONE</b>			
PTP076-5000	2.5" ID; 45°	Black	10" Legs
PTP076-5002	3.0" ID; 45°	Black	10" Legs
PTP076-5030	2.5" ID; 90°	Black	10" Legs
PTP076-5032	3.0" ID; 90°	Black	10" Legs



[FACEBOOK.COM/PRECISIONTURBO](https://www.facebook.com/PrecisionTurbo)

[TWITTER.COM/PRECISIONTURBO](https://twitter.com/PrecisionTurbo)

[YOUTUBE.COM/PRECISIONTURBONET](https://www.youtube.com/PrecisionTurboNet)

# BOOST CONTROL

## Precision 39mm Wastegates

The Precision PW39 39mm external wastegate is made from high grade, high temperature stainless steel and billet aluminum components for the best strength, style and function. A 347 stainless investment cast valve body and Nickel Chromium Alloy valve provide consistent performance without fatigue or failure while also allowing for accurate boost control. The PW39 comes with 5 different 17-7 precipitation hardened springs for further adjustment of boost levels along with standard bolt-style flange for easy mounting. This 39mm wastegate is also designed to be a direct-fit replacement for other units on the market.



## Precision 40mm V-Band Inlet/Outlet Wastegates

The Precision PW40 40mm V-Band Inlet/Outlet wastegate is made from high grade, high temperature stainless steel and billet aluminum components. It features our own purpose-designed wastegate diaphragm and a 347 stainless investment cast valve body which has a smooth internal surface to give the unit exceptional flow while allowing for accurate boost control. It also features a Nickel Chromium Alloy valve and comes with 5 different 17-7 precipitation hardened springs for further adjustment of boost levels. This wastegate is a direct-fit for some units currently in the market.

*Available 1st Quarter of 2015*



## Precision 46mm Wastegates

The Precision PW46 46mm external wastegate is made from high grade, high temperature stainless steel and billet aluminum components. It features PTE's purpose-designed wastegate diaphragm and a 347 stainless investment cast valve body which has a smooth internal surface to give the unit exceptional flow while allowing for accurate boost control. The PW46 features a Nickel Chromium Alloy valve and comes with 5 different 17-7 precipitation hardened springs so that it can be configured to control boost from 1.5 PSI up to 25.5 PSI. This 46mm wastegate is also designed to be a direct-fit replacement for other units on the market.



## Precision 66mm Wastegates

The Precision PW66 66mm external wastegate is perfect for the boost enthusiast looking to get the most from their turbocharged car, truck, or other vehicle.

Made from high grade, high temperature stainless steel and billet aluminum components, the PW66 also uses a 347 stainless investment cast valve body to provide consistent performance without fatigue or failure while allowing for accurate boost control. This unit features an internal Nickel Chromium Alloy valve and 4 individual ports along with a V-band clamp that holds the wastegate cap to the main body structure to allow for an infinite number of wastegate location positions.



What makes this unit truly unique are the special, stabilizing "Precision Pins" which prevent the inlet and outlet flange from spinning. All units feature a black anodized 6061 aluminum billet wastegate cap and are generally compatible with most aftermarket and electronic boost controllers. Additionally, Precision Turbo's external wastegates come with an all stainless steel inlet and outlet flanges and clamps needed for installation. As an added bonus, all of Precision Turbo's external wastegates are warranted to be free from manufacturer's defects for a period of 12 months or 12,000 miles.

## PTE's Blow-Off Valves

The perfect choice for your forced induction race vehicle is PTE's first ever, all-new 64mm blow-off valve! Revolutionary in design, this unit breaks the mold when it comes to BOV technology and performance. Extremely innovative without sacrificing durability or performance, PTE's BOV provides the highest flow and is extremely tunable. As an added bonus, each Precision Turbo & Engine blow-off valve is warranted to be free from manufacturer's defect for a period of 12 months or 12,000 miles.



## TiAL 50mm Blow Off Valve

This 6061 aluminum alloy, CNC-machined unit features a 50.5mm valve with excellent flow capacity for either supercharged or turbocharged applications. The valve seal utilizes a Viton O-ring that is clamped in place to prevent the possibility of sticking to the seat and pulling out. TiAL's incorporation of a V-band aluminum mounting clamp gives a very clean and unique appearance while the valve stem and guide are Teflon-lubricated, hard anodize-coated for wear resistance. Each TiAL 50mm Blow Off Valve comes with a machined aluminum banjo-type air fitting and bolt with an oversized 10mm hose barb for quick response. Flanges sold separately.



## NLR AMS 2000 Boost Controller

The AMS-2000 is the secret the top teams are using and now it is available to you! This controller does what others wish they could do and will outperform ANY controller on the market! NLR's AMS-2000 boost controller features 10 control strategies and 6 predefined datalogging channels and overlay capability. Additionally, auxiliary channel control, G-meter, and offset capabilities that are available in the PRO unit can be enabled at a later date. All laptop based.



[FACEBOOK.COM/PRECISIONTURBO](https://www.facebook.com/precisionturbo)

[TWITTER.COM/PRECISIONTURBO](https://www.twitter.com/precisionturbo)

[YOUTUBE.COM/PRECISIONTURBONET](https://www.youtube.com/precisionturbonet)

# AIR-TO-AIR INTERCOOLER CORES

Precision Turbo is well-known for our leadership in heat exchanger products and now that same cutting edge technology can be yours with our line of air-to-air intercooler cores. All of the cores listed here feature bar and plate construction which can withstand higher boost

pressure. Additionally, they are much more resistant to damage from road hazards than traditional tube and fin designs. You can opt to use these high efficiency cores with your own end tanks or we can custom fabricate an intercooler to meet your unique specifications.



## AIR-TO-AIR INTERCOOLER CORES

Part Number	Length (Inches)	Height (Inches)	Depth (Inches)	HP Rating
PIN051-1021	8.00	11.70	4.50	425
PIN051-1053	13.00	17.35	3.00	680
PIN051-2101	18.00	6.40	3.50	400
PIN051-2160	24.00	8.00	3.50	675
PIN051-2182	24.00	10.00	3.50	775
PIN051-1216	27.00	10.50	3.50	850
PIN051-2228	27.00	12.30	5.00	1,700

*DON'T SEE WHAT YOU NEED? DON'T SWEAT IT.  
WE CAN SOURCE NEARLY ANY SIZE INTERCOOLER CORE IMAGINABLE.  
GIVE US A CALL TO DISCUSS YOUR PROJECT TODAY!*

## Precision Universal Front Mount Intercoolers

Precision Turbo's universal front mount intercoolers feature high density cores with bar and plate construction. This allows each unit to better function as a heat sink, and that's a big advantage in stop and go traffic. This design is also much less susceptible to road hazard damage and can handle higher boost levels than comparable tube and fin designs. Each intercooler comes with contoured cast aluminum end tanks with mounting tabs. Drilled and tapped mounting holes are included with all except PIN053-1005.

<i>AIR-TO-AIR INTERCOOLERS</i>			
Part Number	HP Rating	Overall Dimensions	Air In/Out
PIN053-1005	350-hp	26 3/4" L x 6 1/4" H x 3 1/2" D	2 1/2"
PIN053-1010	600-hp	31 1/2" L x 8" H x 3 1/2" D	2 3/4"
PIN053-1015	750-hp	31 1/2" L x 10 5/8" H x 3 1/2" D	2 3/4"
PIN053-1020	825-hp	34 1/2" L x 10 1/2" H x 3 1/2" D	2 3/4"



## Stock Location Intercooler

### 1986-1987 Buick Grand National & T-Type

Owners of the 1986-1987 Buick Turbo Regals have been raving about this product since it was introduced a few years ago. Made with a high efficiency bar and plate core with 18 flow and 19 cooling rows, this kit comes with cast aluminum end tanks that have been specifically contoured to optimize air flow. Included with the kit is a new mandrel-bent 3" inlet up pipe, a custom aluminum shroud and all the hoses, clamps, brackets, and mounting hardware for a true direct-fit, bolt on installation.

<i>1986-1987 BUICK TURBO REGAL STOCK LOCATION INTERCOOLER</i>				
Part Number	HP Rating	Installed Location	Overall Dimensions	Air In/Out
PIN053-2005	750	Stock Location	13" L x 17 1/4" H x 3" D	3"



## Powerstroke Intercooler

### 2008-2010 Ford Super Duty 6.4L

Precision Turbo and Engine has spent countless hours working behind the scenes to identify and understand your truck and tractor pulling needs. This extremely effective 6.4L replacement intercooler offers a solid 150° intake temperature drop over the stock OEM intercooler and virtually zero boost loss—it's a must-have for any '08-'10 Powerstroke owner! Includes mounting brackets and hardware.



[FACEBOOK.COM/PRECISIONTURBO](https://www.facebook.com/PrecisionTurbo)

[TWITTER.COM/PRECISIONTURBO](https://www.twitter.com/PrecisionTurbo)

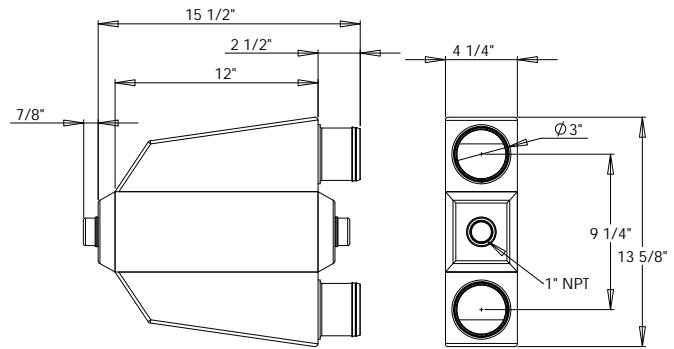
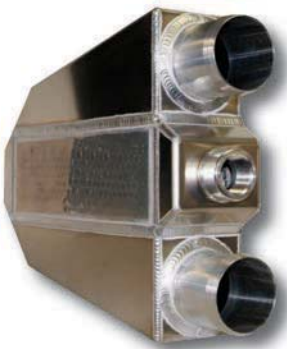
[YOUTUBE.COM/PRECISIONTURBONET](https://www.youtube.com/PrecisionTurboNet)

# LIQUID-TO-AIR INTERCOOLERS

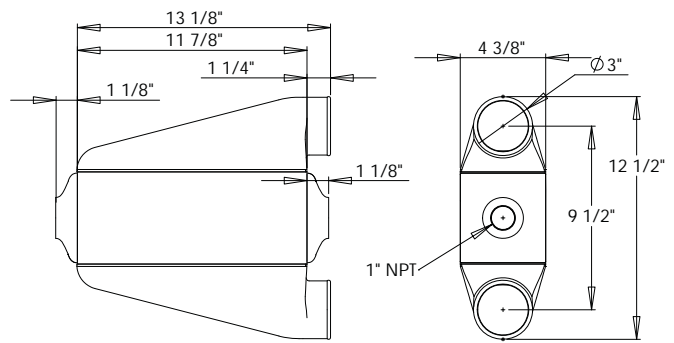
Precision Turbo has been an industry leader for years by constantly innovating and developing cutting-edge technology for heat exchanger products. From the street to the strip, our liquid-to-air intercoolers have been behind the scenes in many of the sport's best known, record-setting turbocharged and supercharged vehicles. Keeping charge air temperature down is crucial to getting the best performance possible out of your engine and you

can trust PTE's intercoolers to exceed your expectations. You know Precision will always keep you well ahead of the competition so don't accept an imitation or knock-off intercooler that can ultimately cost you dollars and horsepower! We offer a versatile line of standard intercoolers that are in stock and ready to go when you need them most.

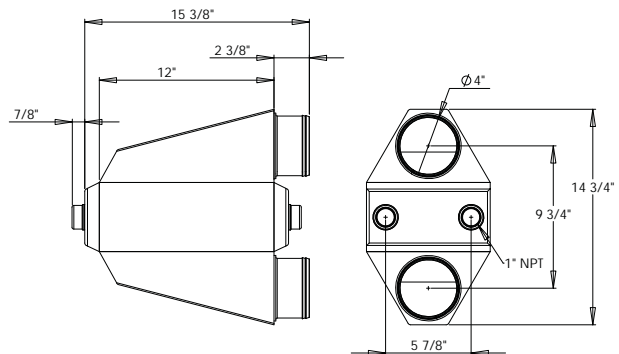
*PT1000*



*PT1001*

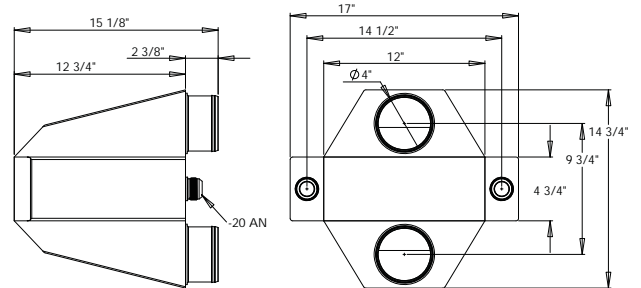


*PT2000*

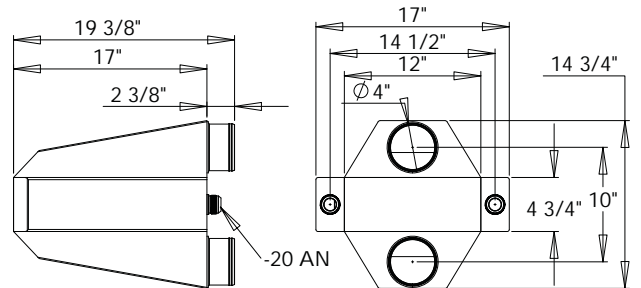




*PT3000*



*PT4000*



*CUSTOM PT1000 LIQUID-TO-AIR INTERCOOLER*



*CUSTOM AIR-TO-AIR INTERCOOLER*



*CUSTOM PT4000 WITH INTEGRATED ICE WATER TANK*



*NEED SOMETHING A LITTLE MORE CUSTOM FOR YOUR APPLICATION?*

Precision Turbo is proud to offer custom made air-to-air and liquid-to-air intercoolers. Call for more information on how to get the best fit and performance for your application today!



[FACEBOOK.COM/PRECISIONTURBO](https://www.facebook.com/precisionturbo)

[TWITTER.COM/PRECISIONTURBO](https://www.twitter.com/precisionturbo)

[YOUTUBE.COM/PRECISIONTURBONET](https://www.youtube.com/precisionturbonet)

# CHAMPIONS & RECORD HOLDERS



## Roger Holder Jr.

World's Quickest and Fastest Drag Radial Vehicle  
(1/4th mile): 6.12 @ 244 MPH  
PSCA XDR/TT5 Champion  
PSCA XDR/TT5 Top Speed Record (1/8th mile): 178.71 MPH  
PSCA XDR/TT5 ET Record (1/8th mile): 4.464



## Kristian Jeffrey

### TOP POWER Racing

Caribbean Motor Racing Championship: Group 4  
Champion



## Jared Jones

NHRDA Top Diesel Champion  
NHRDA Top Diesel ET Record: 6.466  
NHRDA Top Diesel MPH Record: 225.30 MPH



## TJ Kasper

Atco Outlaw 10.5 Points Champion



## Larry Larson

World's Quickest and Fastest Street Legal Vehicle:  
5.95 @ 244.43 MPH



## Tero Laukkanen

EDRS FIA Pro Mod Top Speed Record: 251.91 MPH



## Jeff Lutz

Hot Rod Drag Week Unlimited Class Champion  
Average of 6.84 @ 212 MPH



## Cole Marmon / Speed Factory

World's Quickest and Fastest Sport Compact:  
6.054 @ 240.91 MPH



## John Mihovetz

World's Quickest and Fastest Modular-Powered Vehicle:  
5.92 @ 248.07 MPH



## DeWayne Mills

NMCA Radial Wars ET Record: 4.088  
NMCA Radial Wars Top Speed Record: 197.51 MPH  
1st Drag Radial car to 200 MPH (1/8th mile)



## Brad Moss

PPL Pro Stock Champion



## Paul Mouhayet

World's Fastest Turbo Doorslammer: 273.39 MPH



# **FUEL SYSTEM COMPONENTS**

*Precision Turbo and Engine's 550 lb Injectors  
Showcased on a NHRA Pro Modified Race Car*

# FUEL INJECTORS

Upgrading fuel injectors may be a necessity when changing turbochargers, exhaust headers, throttle bodies, fuel systems, or cylinder heads. It's important to insist on the best. Precision Turbo brand fuel injectors are individually hand-selected, flow-checked, and matched to

within 1% of each other for optimum performance from your vehicle. All horsepower ratings are based upon a 90% duty cycle at 43.5 psi of fuel pressure based upon a BSFC of .50. Compatible with all known aftermarket drivers (unless otherwise noted).

## SPORT COMPACT INJECTORS

Part Number	Size C/C	Impedance	Nozzle	Each Injector Supports
PFU042-0310	310	High	Disc	52 HP
PFU042-0400	400	High	Ball & Seat	67 HP
PFU042-0440	440	High	Disc	77 HP
PFU042-0525	525	High	Ball & Seat	90 HP
PFU042-0580	580	Low	Ball & Seat	94 HP
PFU042-0650	680	Low	Ball & Seat	99 HP
PFU042-0651*	650	High	Disc	117 HP
PFU042-0780	780	Low	Ball & Seat	135 HP
PFU042-0880	880	Low	Ball & Seat	151 HP
PFU042-0950	1000	Low	Ball & Seat	171 HP
PFU042-1201	1200	Low	Ball & Seat	216 HP
PFU042-1600	1600	High	Innovative	297 HP

## DOMESTIC INJECTORS

Part Number	Size C/C	Impedance	Nozzle	Each Injector Supports
PFU041-0240	24	High	Pintle	43 HP
PFU041-0300	30	High	Disc	54 HP
PFU041-0370	37	High	Ball & Seat	67 HP
PFU041-0380	38	High	Disc	68 HP
PFU041-0420	42.5	High	Disc	77 HP
PFU041-0421	42.5	High	Multec 2	77 HP
PFU041-0500	50	High	Ball & Seat	94 HP
PFU041-0550	55	Low	Ball & Seat	99 HP
PFU041-0650	65	Low	Ball & Seat	117 HP
PFU041-0651*	65	High	Disc	117 HP
PFU041-0652**	65	High	Disc	117 HP
PFU041-0750	75	Low	Ball & Seat	135 HP
PFU041-0840	84	Low	Ball & Seat	151 HP
PFU041-0950	95	Low	Ball & Seat	171 HP
PFU041-1201	120	Low	Ball & Seat	216 HP
PFU041-1600	160	High	Innovative	297 HP
PFU041-2250	225	Low	Pencil	405 HP
PFU041-5000***	550	Low	Pintle	462 HP

\*Tall \*\*Short

\*\*\*For use with alcohol; based on 85PSI

\*\*\*Must be used with specific BS3 EMS



PFU041-2250

## SPORT COMPACT MITSU INJECTORS

Part Number	Size C/C	Impedance	Nozzle	Each Injector Supports
PFU043-0440	440	High	Disc	77 HP
PFU043-0500	525	High	Ball & Seat	90 HP
PFU043-0540	550	Low	Disc	94 HP
PFU043-0580	580	Low	Ball & Seat	99 HP
PFU043-0680	680	Low	Ball & Seat	117 HP
PFU043-0780	780	Low	Ball & Seat	135 HP
PFU043-0880	880	Low	Ball & Seat	151 HP
PFU043-0950	1000	Low	Ball & Seat	171 HP
PFU043-1200	1200	Low	Ball & Seat	216 HP



CALL US ABOUT INJECTOR CONNECTORS, FUEL RAILS, REPLACEMENT O-RINGS, AND INJECTOR BUNGS!

# FUEL SYSTEM COMPONENTS

Selecting the right fuel system components can be a stressful experience. Precision Turbo has long been a leader with Aeromotive, Walbro, Waterman, and Weldon

products. Combine this with smaller, miscellaneous parts ranging from clamps to fuel rails, and you've got a one stop fuel system shop ready to get you going today!

## Aeromotive

With their unique combination of ultra-high performance, durability, and reliability, Aeromotive's in-line pumps leave the competition behind. All Aeromotive fuel pumps are designed to meet the high performance demands of your application with durability and reliability. Whether you're running 200HP or 2000HP, carbureted or fuel injected, Aeromotive pumps optimize flow and line pressure. In addition to their line of fuel pumps, Aeromotive regulators beat the competition with the best of all worlds; Outstanding, consistent performance from equipment that's built to last. Aeromotive delivers more flow than similar regulators thanks to a custom, convoluted diaphragm that maximizes piston stroke while minimizing stress. Every model uses a poppet designed specifically for that regulator and a diaphragm fabricated from a proprietary elastomer material. The standard vacuum boost port delivers a perfect 1:1 boost reference and makes these regulators ideal for turbocharged and supercharged engines.



## Walbro

One of the leading original-equipment fuel pump suppliers, Walbro Automotive supplies a wide range of electric fuel pumps and related fuel system components to the automotive market. These pumps are widely known for their quality and dependability worldwide. Walbro in-tank electric fuel pumps utilize a proven gerotor design. The outside dimensions, however, are compact enough to fit existing hanger assemblies, without modification. With pumps available for many applications, you can be assured you'll receive the pump and installation kit specifically designed for your vehicle.



## Weldon

With legendary performance and reliability, Weldon fuel pumps are the ones you can trust with your mega dollar engine. Weldon racing pumps were developed using 68 years of aerospace/military experience, materials and technology to deliver high flow, high-pressure fuel to racing engines with unprecedented reliability. With pumps and regulators available for both fuel injection and carbureted applications, Weldon Pump continues to be on the cutting edge of fuel delivery products.



[FACEBOOK.COM/PRECISIONTURBO](https://www.facebook.com/PrecisionTurbo)

[TWITTER.COM/PRECISIONTURBO](https://www.twitter.com/PrecisionTurbo)

[YOUTUBE.COM/PRECISIONTURBONET](https://www.youtube.com/PrecisionTurboNet)

# CHAMPIONS & RECORD HOLDERS



**Kurt Neumann**

Bonneville G/PS Landspeed Record: 173.4104 MPH  
Bonneville F/PS Landspeed Record: 138.7604 MPH



**Daniel Nunziante**

Australia's 1st 6-Second Drag Radial Car:  
6.89 @ 222 MPH



**Scott Oksas**

NMCA West Pro Mod ET Record (1/4 mile): 6.044  
NMCA West Pro Mod Top Speed Record (1/4 mile):  
253.56 MPH  
WCOPMA ET Record: 5.918



**Craig Pio**

Northeast Outlaw Pro Mod Association ET Record: 5.861  
Northeast Outlaw Pro Mod Association Top Speed Record:  
255.39 MPH



**Devin Schultz**

World's Quickest & Fastest 2G AWD DSM:  
7.94 and 185 MPH



**John Urist**

NMRA Street Outlaw Champion  
NMRA Street Outlaw ET Record: 6.952  
NMRA Street Outlaw Top Speed Record: 204.66 MPH



**Frank Valera**

NMRA Coyote Modified Champion  
NMRA Coyote Modified ET Record: 8.301  
NMRA Coyote Modified Top Speed Record: 165.19 MPH



**Don Walsh, Jr.**

Quickest NHRA Legal Pro Modified: 5.749 ET



**Chad Weitzenkamp**

OTTPA Super Farm Champion



**Gary White**

**EKanoo Racing**

World's Quickest and Fastest Sport Compact:  
6.054 @ 240.91 MPH



**Harrison Zauke**

World's Quickest and Fastest AWD Jeep SRT8:  
8.95 @ 159 MPH



**Turky al Zafiri**

World's Quickest Turbo Doorslammer: 5.461 ET

# ENGINE MANAGEMENT & DATA ACQUISITION



# ENGINE MANAGEMENT SYSTEMS

## Big Stuff 3

Widely recognized as the industry leader in electronic engine and powertrain controllers for the performance aftermarket, Big Stuff 3 manufactures a variety of different systems to fit a multitude of engine configurations. In its base form, the GEN3 SEFI system includes WBO2 control, individual cylinder fuel and spark compensations, and the following additional standard features:

- Configurable Load & RPM axis to enable optimization in desired operating range
- Internal data logging (DAI) – 52 channels at 50 times per second
- Capable of driving smart and dumb Coil-on-Plug (COP) ignitions with the stock sensors
- Injector phasing, at the start of the fuel injection event
- Programmable “peak-&-hold” injector drivers with current chopping capability. Software configurable ignition options for GM HEI, Ford TFI, LT1, V6 DIS, and IPU
- Individual cylinder fuel & spark compensation. Turbocharged starting line timing curve
- Integrated 2-Step for Coil-On-Plug (COP) ignitions
- 1, 2, 3, 4 & 5 Bar MAP sensor compatible
- Programmable injector opening vs. battery voltage
- Improved transient fueling algorithms
- Seamless decel fuel cut-off



In addition to the standard features, Big Stuff 3 offers many optional performance upgrades so that you can custom tailor the system to suit your exact needs. Two of the newest and most popular upgrades are:

- The CO2 Boost Controller integrated into Big Stuff 3 Engine Management System offers control based upon engine speed (RPM), vehicle speed (MPH), or time. The integrated boost controller also offers calibratable settings for both the footbrake and the transbrake. The system is designed to be able to simulate a complete run in the pits so one can verify functionality before heading to the burn-out box. This complete kit comes with two solenoid valves, an 100PSI transducer, and essential plug-and-play wiring.
- The Big Stuff 3 4 Stage Dry Nitrous Pro Modified system features four stages that are triggered either by internal timers or external Digiset timers. The supplemental nitrous fuel is calibrated in pounds per hour (based upon an 160lb/hr injector at 75PSI) which allows for easy tuning of each stage. The RPM axis points can also be calibrated so the fuel and spark curves can be easily tailored to any specific engine. This upgrade is a “must have” for any serious racer using Nitrous as their power-adder of choice!



## AEM

The Infinity-6 and Infinity-8h ECUs deliver state-of-the-art electronic fuel injection (EFI) control capabilities typically found only at upper echelons of Motorsports. Through the Infinity ECU, AEM makes this technology affordable for both professional race teams and amateur racers.

The Infinity-6/8h include all of the advanced features found in the Infinity-8/10/12 including the latest generation 200 MHz automotive processor that can process 400 MIPS. Airflow model-based (VE) tuning eliminates the lookup of many correction tables needed in previous generation ECUs. Flex-fuel and multi-fuel capability, on-board wideband air/fuel control, map switching and knock control are included. Engine protection strategies include coolant temp, oil temp, AFR vs. MAP, intake air temp, knock and fuel pressure. Programmable drive-by-wire, variable cam timing, boost control, nitrous control, and traction control are included. Data logging up to 64 GB via a removable USB drive is standard with logging rates up to 1 KHz per channel. The Infinity-6/8h is able to communicate with 3rd party dashes and loggers and is AEMnet enabled. All maps can be password protected. Its sealed enclosure and IP67-rated communications ports are suitable for engine bay mounting.



## DATA ACQUISITION

### Racepak

Racepak is the leading manufacturer of data loggers and high-performance dashes. Go faster, make more power and manage your race car's tune more effectively by gathering every bit of data possible with Racepak! From loggers that can gather a dizzying amount of data in seconds to ultra high-tech dashes that display (and replay) everything you need to know quickly and easily, Racepak has a wide variety of products that incorporate the latest and greatest features and technology.

Solving the wiring complexity of the modern race car, the Racepak SmartWire is a fully programmable power control module. While traditional wiring provides control of vehicle electronic components through the routing of wiring to single or multiple fuses, relays, and circuit breaker panels, the Racepak Smartwire functions as a central "command center" for all vehicle wiring. The design of the module serves to reduce installation weight and clutter while the exclusive single cable V-Net technology integrates seamlessly with Racepak's data loggers and displays.



**PRECISION TURBO & ENGINE IS PROUD TO BE A STOCKING DISTRIBUTOR OF THE FULL RACEPAK LINE! PLEASE CONTACT US FOR MORE INFORMATION.**



[FACEBOOK.COM/PRECISIONTURBO](https://www.facebook.com/PrecisionTurbo)

[TWITTER.COM/PRECISIONTURBO](https://www.twitter.com/PrecisionTurbo)

[YOUTUBE.COM/PRECISIONTURBONET](https://www.youtube.com/PrecisionTurboNet)

# THROTTLE BODIES & INTAKE PLENUMS

Precision Turbo has the answer to your electronic fuel injection hardware needs with throttle bodies, plenums, wiring harnesses, sensors, and more. Give us a call today for the latest products and best available pricing.



**WILSON  
MANIFOLDS**

Part Number	Product Description
<b>WILSON THROTTLE BODIES</b>	
CNC Machined, Billet Aluminum	
Hardware & Gaskets Included with Most Throttle Bodies	
PEP024-1500	65mm Throttle Body
PEP024-1502	70mm Throttle Body
PEP024-1504	75mm Throttle Body
PEP024-1506	80mm Throttle Body
PEP024-1508	90mm Throttle Body
PEP024-1510	95mm Throttle Body
PEP024-1512	105mm Throttle Body
PEP024-1536	4500 Throttle Body
<b>RACING THROTTLE BODIES</b>	
CNC Machined, Billet Aluminum	
Hardware & Gaskets Included with Most Throttle Bodies	
PEP024-1090	4-Barrel TB 4150 Black
PEP024-1094	4-Barrel TB 4500 Black
PEP024-1097	4-Barrel TB 4500 Polished
PEP024-1100	Dual 275 TB w/o Fuel Rail

Part Number	Product Description	Year
<b>BUICK GRAND NATIONAL</b>		
CNC Machined, Billet Aluminum, Hardware & Gaskets Included		
PEP024-1005	65mm Throttle Body	1986-87
PEP024-1008	70mm Throttle Body	1986-87
<b>FORD MUSTANG</b>		
CNC Machined, Billet Aluminum, Hardware & Gaskets Included with Most Throttle Bodies		
PEP024-1026	65mm TB	1986-93
PEP024-1029	65mm TB Race	1986-93
PEP024-1032	70mm TB	1986-93
PEP024-1035	70mm TB Race	1986-93
PEP024-1040	75mm TB	1986-93
PEP024-1043	75mm TB Race	1986-93
PEP024-1048	80mm TB Race	1986-93
PEP024-1050	85mm TB Race	1986-93
PEP024-1052	90mm TB Race	1986-93
PEP024-1054	90mm Wiggins Clamp TB Race	1986-93
PEP024-1055	90mm Wiggins Clamp TB Kit	1986-93
PEP024-1056	105mm Full TB Race	1986-93
PEP024-1057	105mm Clamshell Throttle Body	1986-93
PEP024-1059	125mm V-Band Throttle Body	1986-93
PEP024-1046	75mm 2V TB	1996-04
PEP024-1060	Cobra & Bullitt Ellipse TB	1996-98
PEP024-1061	Special Cobra Oval TB	1996-98
PEP024-1062	Cobra TB & Power Inlet	2003



Part Number	Inlet Size	Elbow	Orientation	Flange
<b>PLENUMS</b>				
PEP022-1008	65mm	N/A	Forward	Buick
PEP022-1009	65mm	N/A	Forward	Buick
PEP022-1010	70mm	N/A	Forward	Buick
PEP022-1011	70mm	N/A	Forward	Buick
PEP023-1005	90mm	100-degree	Forward	4150
PEP023-1006	90mm	90-degree	Forward	4150
PEP023-1008	90mm	90-degree	Sideways	4150
PEP023-1009	90mm	100-degree	Forward	4150
PEP023-1010	90mm	90-degree	Forward	4150

# TORQUE CONVERTERS

## ProTorque Revolution Series Torque Converters

ProTorque Revolution Series Converters are igniting the racing world! They are unmatched in performance and have helped our customers set numerous records and win multiple championships this year. Are you dying to get your hands on one?

Call Precision Turbo and Engine today for a personal overview of your performance needs and specifications pertaining to the "Ultimate Drag Racing Converter" to hit this market.

All converters are made to suit your exacting needs. Please note that consultation is highly recommended at this level of usage.



### TORQUE CONVERTERS

Part Number	Product Description
PTC100-0005	Rosslar/ATI/10" MP1
PTC100-0010	Rosslar/ATI/10" MP2
PTC100-0015	Rosslar/ATI/10" MP3
PTC110-0005	TH400/PG 30 Spline (Small Shaft)/10" MP1
PTC110-0010	TH400/PG 30 Spline (Small Shaft)/10" MP2
PTC110-0015	TH400/PG 30 Spline (Small Shaft)/10" MP3
PTC110-0020	TH400/PG 30 Spline (Small Shaft)/10" MP4
PTC120-0005	Coan/Lenco 1.125" Spline/10" MP1
PTC120-0010	Coan/Lenco 1.125" Spline/10" MP2
PTC120-0015	Coan/Lenco 1.125" Spline/10" MP3
PTC130-0005	30 Spline LPET/9.5" MP1
PTC130-0010	30 Spline LPET/9.5" MP2
PTC130-0015	30 Spline LPET/9.5" MP3



[FACEBOOK.COM/PRECISIONTURBO](https://www.facebook.com/precisionturbo)

[TWITTER.COM/PRECISIONTURBO](https://twitter.com/precisionturbo)

[YOUTUBE.COM/PRECISIONTURBONET](https://www.youtube.com/precisionturbonet)

# Like Us On Facebook!

Learn about new products, stay up to date about upcoming races and take advantage of great deals on apparel!

[Click here to visit our Facebook page now!](#)



@PrecisionTurbo



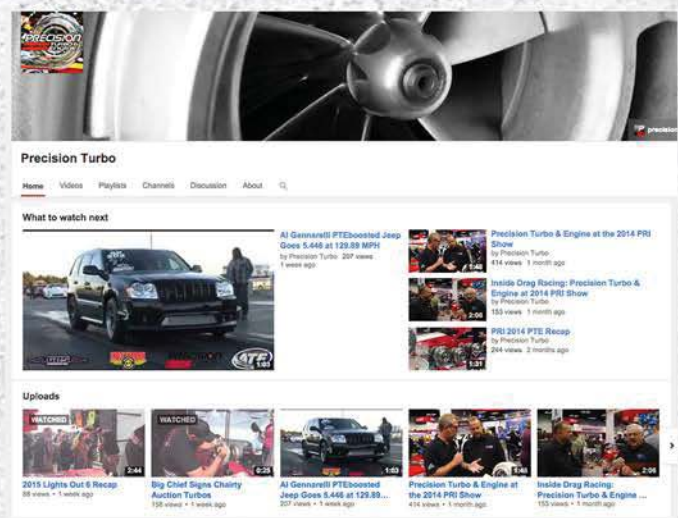
@PrecisionTurbo



[pinterest.com/precisionturbo](https://pinterest.com/precisionturbo)

Subscribe to our **YouTube** channel to watch the latest from our Champions and Record Holders!

 **Watch Now!**



**PRECISIONTURBO.NET**  
**PRECISIONTURBO.NET/RACERS**  
**PRECISIONTURBO.NET/NEWS**